

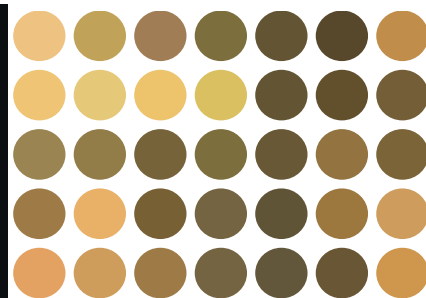
DREAM ASPIRE ACHIEVE

2017 HIGHER EDUCATION PROSPECTUS



WELCOME

to University Centre Peterborough



'To engage, enable and empower students to meet the challenges of the future'

I would like to welcome you to University Centre Peterborough. While you are studying with us we aim to support your development and assist you in achieving your career ambitions. We very much care about you as individuals and one of our key objectives is to ensure we listen to your views and continuously develop our provision so that your needs are met.

University Centre Peterborough represents the single most important development in providing Higher Education in Peterborough's history. The University Centre offers a broad portfolio of courses covering a range of subject areas and we are rapidly developing specialisms in a number of key areas. Our portfolio is constantly being revised and updated to take account of the emerging needs and aspirations of local, national and international markets.

University Centre Peterborough (UCP) was formed in 2007 and is a joint venture between Anglia Ruskin University (ARU) and Peterborough Regional College (PRC). University Centre Peterborough opened its purpose built £9 million facility in November 2009 on the campus of PRC. The joint venture agreement outlines the responsibilities of both parties for managing academic standards. While the Anglia Ruskin University Senate has the ultimate responsibility for standards through its Quality Enhancement and Standards Committee, the Centre is responsible for managing the quality and delivery of teaching, learning and assessment in line with academic regulations and procedures. The joint venture is overseen at a strategic level by a Board of Directors made up by ARU, PRC and an independent chair.

Students remain at the heart of all that we do and are integral to the decision making process. We aim to ensure that the attributes of the UCP graduate result in

personal and academic success. The **University Centre Peterborough** Graduate demonstrates:

- Resilience
- Engagement in and promotion of continuous academic and professional development
- A global perspective and cross –cultural sensitivity and awareness
- Clarity of communication and purpose
- Information and skill expertise
- Intellectual autonomy and enquiry
- Adaptability

For those moving to Peterborough we have a good network of student support ranging from the academic to extra-curricular. We have a Student Experience Officer who is here to support you finding accommodation. Numerous societies and activities ensure University Centre Peterborough is a hub of activity and opportunity. Our Sports Council supports competitive and recreational sports. Our Student Ambassadors provide a friendly face from day one and will advise and guide you about course related and extra-curricular activities. We realise that sometimes you just want to talk to one of your peers.

Employability has been another area we have developed at UCP. We have forged excellent working relationships with companies such as, BGL – Compare the Market and Saffery Champness as well as numerous third sector organisations such as the Heritage Lottery Fund. Local schools are employing students prior to graduation as Academic Mentors. This enhances your CV and provides useful contacts should you wish to go into teaching, probation work or youth related activities. Companies recruit direct from us and also offer students paid internships and commissioned projects. We also have excellent connections with

volunteer organisations and support you in your personal development from year one. We strive to keep timetables to a maximum of three days so that you can work part-time to off-set the cost of your studies. For those in employment we offer degrees on a part-time basis. Dissertations and projects may be contextualised to meet your career ambitions.

If you would like further information about any of the courses we offer or if you are looking for advice and guidance on the best course for you, why not contact our friendly Information Centre on 01223 695750 or email ucpenquiries@anglia.ac.uk and find out how you can join the many students who achieve their ambitions with us every year.

We look forward to seeing you at University Centre Peterborough.



Liz Knight
Academic Director
University Centre Peterborough



Contents

Welcome	02
The Joint Venture	04
A-Z of Courses	06
Open Days	07
Events	08
How to apply	09
Fees and Financial Support	11
International Students	13
Supporting You	14
Student Ambassadors	16
Why Choose Us	18
UCP Successes	20
UCP Honorary Graduates	22
Alumni	23
Employability	24
Degree Courses	26
HNC/D and Degree Top-Ups	70
Student Life	74
Accommodation	76
Facilities Hire	77
The City of Peterborough	78
How to Find Us	81

Joint Venture Anglia Ruskin University

Anglia Ruskin is a modern, global university. Each year, 39,000 individuals from 177 countries gain qualifications with us in four continents. As one of the largest universities in the east of England, with five faculties and five research institutes, we're home to a thriving community of people keen to get on, led by inspiring, award-winning tutors.

Our main campuses are based in three vibrant cities, Cambridge, Chelmsford and Peterborough, and Anglia Ruskin makes it easy for you to study close to where you live thanks to our network of academic partnerships. In 2008 we started a joint venture with Peterborough Regional College to create University Centre Peterborough (UCP). UCP offers a broad portfolio of degree courses which are validated by Anglia Ruskin University.

We offer a wide range of exciting undergraduate and postgraduate degree courses - many of these are recognised by industry, with a large number being professionally accredited. Our lecturers are rated among the most enthusiastic and interesting in country and our courses among the most intellectually stimulating*. Anglia Ruskin has also been recognised for its academic excellence by the UK's Higher Education Funding bodies, with 12 areas classed as generating world-leading research**.

All of our courses are developed with future employability in mind, and our students benefit from support in finding work placement and volunteering opportunities as well as from practical advice and skills workshops run by Faculty Employability Advisers at our three



main campuses. We have close partnerships with local, national and international businesses – each year we support some 2,000 businesses, which are always looking for bright, talented people. It's no wonder 9 out of 10 of our students report being in work or further study within six months of graduating***.

At Anglia Ruskin we're keen to promote the concept of entrepreneurship among students, staff and alumni, and are proud to have been recognised as THE UK Entrepreneurial University of the Year (Times Higher Education Awards 2014). There are many signs of entrepreneurial focus throughout our university, including our Centre for Enterprise Development and Research (CEDAR), our StartupLabs in Cambridge and Chelmsford (offering dedicated space for early-stage business ideas and projects), The Big Pitch (our start-up business planning competition), The Little Pitch (our entry-level business ideas competition) and our series of Be Your Own Boss seminars.

Students at all campuses benefit from a lively, rewarding setting for student life, with access to some of the very best facilities for study, sport and social activities. We've invested heavily in our facilities in recent years, which include four university libraries, forensic laboratories, simulation suites, mock hospital wards, a mock law court, multimedia and recording studios and our new, state-of-the-art Bloomberg Financial Markets Lab in Chelmsford, where students can learn to trade and invest using virtual money. Our campuses also reflect our environmental values and we're committed to making sustainability a part of every student's experience. For more information about Anglia Ruskin please visit anglia.ac.uk.

*National Student Survey 2014

**Research Excellence Framework (REF) 2014

***Graduates working or in further study (Destinations of Leavers from Higher Education Institutions, 2012/13)



Anglia Ruskin
University

Peterborough Regional College

Peterborough Regional College is proud to partner with Anglia Ruskin University to deliver Higher Education in Peterborough. The synergy we get from University Centre Peterborough's superb location in the heart of our shared campus allows us to focus resources effectively for the benefit of learners. Collaboration means that we can operate efficiently to keep tuition fees low whilst allowing access to tremendous resources and employer engagement links that are the envy of others.

PRC has been providing high quality education and training for over 60 years. We offer a broad range of vocational full and part-time courses in a huge variety of subject areas to over 7000 learners. Looking to the future, we are strong supporters of the aspiration for an independent University of Peterborough and play a key role in the stakeholder group working hard to make this a reality.

Courses at the College are designed with careers in mind and classes combine both theory and practical sessions to provide students with the necessary skills, experience and knowledge to pursue their chosen

career path. Employability skills are embedded within every study programme and students also benefit from integrated work experience as part of their studies, supported by our Work Placement team.

At Peterborough Regional College, our tutors are professionals within their subject areas and have years of experience within their industry. They are committed to supporting students in achieving their goals and work with them to ensure they are equipped with the skills and qualifications allowing them to succeed.

After completing a course at PRC, students are able to go directly into employment, climb the career ladder within their current

employment, or progress onto Higher Education for further study. Many students choose to stay in the local area to continue their studies, and quite naturally, the University Centre Peterborough is a popular choice.

For more information about Peterborough Regional College, please visit www.peterborough.ac.uk.



A-Z Courses

Arts and Social Sciences – Anglia Ruskin University (ARU) Accredited

Archaeology and Landscape History BA (Hons)	26
Criminology BA (Hons)	28
English Literature BA (Hons)	30
Media Studies BA (Hons)	32
Multimedia Journalism BA (Hons)	34
Performing Arts BA (Hons)	36
Psychosocial Studies BA (Hons)	38
Public Services FdA	40
Public Services Top-up BA (Hons)	41
Sociology BA (Hons)	42

Business School - ARU Accredited

Accounting and Finance BSc (Hons)	44
Business Management BSc (Hons)	46
Postgraduate Diploma in Human Resource Management CIPD	48

Education - ARU Accredited

Early Years, Childcare and Education (Education focus) FdA	50
Education Top-up BA (Hons)	52

Science and Technology - ARU Accredited

Bioscience FdSc & BSc (Hons)	54
Computer Science FdSc	56
Computing and Information Systems BSc (Hons)	58
Construction Management Top-up BSc (Hons)	60
Crime and Investigative Studies FdSc	62
Crime and Investigative Studies BSc (Hons)	64
Integrated Engineering Top-up BEng (Hons)	66
Sports Coaching and Physical Education BSc (Hons)	68

HNC/HND (Pearson BTEC) - Peterborough Regional College Provisions

Civil Engineering HNC/HND	70
Construction Management HNC/HND	71
Electrical and Electronic Engineering HNC	72
Mechanical Engineering HNC	73



Open Days

Our Open Days are a great way to get a snap shot of what university life is like here at UCP and provide you with all the information you need to help you make the right decision for your future.

On the day you will be able to have a look around the University Centre and speak to academic and admissions staff about applications and courses. We will have various displays and demonstrations for our courses and current students will also be on hand to tell you about studying at UCP.

In addition to our course advice we will also have financial talks, information on our clubs and societies and accommodation. Open Days can be booked via our website www.ucp.ac.uk.

Our Open Day dates are:

**Wednesday
18th May 2016
5.30pm – 8pm**

**Monday 10th
October 2016
5.30pm – 8pm**

**Saturday 28th
January 2017
10am – 2pm**

**Wednesday 15th
March 2017
5.30pm – 8pm**

**Tuesday 6th
June 2017
5.30pm – 8pm**

Applicant Days – April 2016/June 2016

These are for students who have applied to the University Centre to give them the opportunity to experience a small taste of university life before they start their studies in September. It is also a great opportunity for students to meet their future class mates! We also welcome late applicants as we can assist with your UCAS application on the day.

Contact us

Website – www.ucp.ac.uk

Phone - 01223 695750 - 0845 196 5750

Email - ucpenquiries@anglia.ac.uk

Facebook - www.facebook.com/universitycentrepeterborough

Twitter - [@ucpeterborough](https://twitter.com/ucpeterborough)

**Institution
code
P56**





Events

Global Entrepreneurship Week – November 2016

Working alongside organisations such as the National Association of College & University Entrepreneurs, Anglia Ruskin University, Peterborough Regional College and employers, the University Centre will provide a week of activities ranging from guest lectures, workshops and include entrepreneurial matching activities. Students will be able to join and contribute to the Enterprise Society whose focus will be to kick start business and networking opportunities.

Science, Technology, Engineering and Maths (STEM) Day - March 2017

This event is packed with a variety of STEM-based interactive workshops, guest lectures and demonstrations. It is organised by both University Centre Peterborough and Peterborough Regional College.

HE Conference – June 2017

Our annual Higher Education Conference will be taking place in June 2018 and is open to students in year 12 and 13 and mature applicants. The aim of the event is to provide you with information about Higher Education, choosing the university that is right for you and information on other options available. Subject tasters will also be delivered for those students looking to find out more about a particular course. For more information please call or email us.

Children's University

The Children's University is a national project which recognises the achievements of young people who take part in high quality out of hours learning activities.

University Centre Peterborough (UCP), Peterborough Regional College (PRC) and Anglia Ruskin University (ARU) are learning destinations for the Children's University and offer a number of events for students aged 7-14 throughout the year. Each session will allow children to take part in fun filled activities which will enhance their learning potential.

For more information please contact University Centre Peterborough on 01223 695750 or email ucpenquiries@anglia.ac.uk.

Guest Lectures

Throughout the year we host a number of guest lectures which are not only available to students but also for members of the public to attend. These range from Culture to Social Policy topics and we welcome enthusiasts to attend.

For more details on any of the events mentioned above please keep an eye on our website www.ucp.ac.uk or email ucpenquiries@anglia.ac.uk

How to apply

Please be aware that all information contained is accurate at the time of going to print and note that the most up-to-date course information and fee advice is listed on the website.

Applying to UCP is easy! To apply for a course just follow the three-step process below.

Step 1

Choose your course

UCP offers a wide range of undergraduate, foundation and bachelor degrees, as well as postgraduate degree qualifications. You can browse the full list of undergraduate or postgraduate courses online at www.ucp.ac.uk or call us on 01223 695750.

Step 2

Check your Qualifications

Once you have decided on the course you would like to study, you need to check that you meet the entry requirements. Each course and university will have different entry requirements. If you are still studying at school or college you do not have to wait until after you finish your current course to apply. We can make you a conditional offer based on the predicted results you expect to achieve. We also offer accredited prior learning which means life experience and career knowledge can be considered when making an application.

Step 3

Make an Application

Once you have chosen your degree course you are ready to make an application.

If you have feel that you already meet the entry criteria and you have completed all of your qualifications; if you have not applied through UCAS before and only intend on applying to UCP, please contact us for a quick and easy application process!

Full-time Study

If you are applying for a full-time undergraduate bachelor's course you will need to make an online application through UCAS. Applications to UCAS are made online using their web-based Tracker System via 'Apply' (wwwucas.ac.uk/apply/). On your UCAS application you need to include the institution code for the university to which you wish to apply. The institution code for University Centre Peterborough is P56. Application forms, accompanied by the registration fee, should be returned by UCAS deadlines <http://wwwucas.com/apply/key-dates>. The first deadline to submit an application is in January in the year before the programme commences, although it is possible to apply later than this if courses still have vacancies. Anyone applying after the 30 June by 18:00 will be automatically entered into 'Clearing'. 'Clearing' takes place after the publication of the A Level results in August when universities will have a clearer picture of how many offers have been accepted and therefore how many vacancies they may have.

Part-time and Postgraduate Study

If you are applying for a part-time or postgraduate course you can either complete the application form in the back of this guide or download a paper application form from our website www.ucp.ac.uk



Selection

Successful applicants will receive either a conditional or unconditional offer. Depending on the course that you have applied for, you may be invited to attend an interview or assessment, or requested to submit a portfolio of work or samples of writing. Applicants may be asked to obtain or provide evidence of further or pending qualifications that will allow them to fully satisfy the course entry criteria. Students with a conditional offer may, for example, be awaiting final results for their A Levels or BTECs. Unconditional offers may also be issued directly to applicants whose qualifications fully satisfy the entry criteria of their desired course.

Disabled Students

University Centre Peterborough welcomes enquiries and applications from disabled students whether disability is due to mobility or sensory impairment, specific learning difficulties, mental health issues or a medical condition. Applications from disabled students are processed in the same way; however, applicants should declare their disability at the application stage. This is so that UCP can contact you in order to determine any support needs that you may have. Disabled applicants may be invited to visit the campus so that this can be done in person.

Disclosure of Criminal Background

To help the university reduce the risk of harm or injury to any member of its community caused by the criminal behaviour of other students, UCP must know about any relevant criminal convictions an applicant has. You must tell UCAS or UCP by declaring that you have a conviction on your application. Do not send details of the offence; simply tell us that you have a criminal conviction. You may then be asked to supply more details.

Accreditation of Prior Learning (APL)

UCP offers students flexibility in their studies, by recognising learning they may have completed elsewhere, before applying to study. The Accreditation of Prior Learning processes ensure that we can take this into account when determining the modules you must study. It is important that you should identify any relevant prior learning when you apply; should your previous study specifically relate to modules on the course you wish to undertake. We may approve a reduced programme of study, which could shorten the time and cost required to obtain your award. Where this relates to learning completed through an earlier course of study, this is called Prior Certificated Learning, and where learning has been achieved through relevant work or experience, this is referred to as Prior Experiential Learning. Claims must be approved before you commence a course.



Accreditation of Prior Certificated Learning (APCL)

APCL relates to learning completed through an earlier course of study. If you have previously completed a course which is relevant to your proposed course, you should make this clear when you apply for admission. To be eligible for consideration in this way you must be able to submit certification, which shows your success in a final assessment for that course. Learning must be current i.e. completed within the last five years. Or further evidence of updating will be required. Simple participation in a course or an attendance certificate is not sufficient.

Accreditation of Prior Experiential Certificated Learning (APEL)

It is important to understand that the APEL process does not award academic credit for experience alone, but for learning which can be shown to have been achieved through that experience. Students are required to prepare an individual case for the credit arising from their learning experiences. This normally means that a student receives support in the preparation of a portfolio, in which their claim is justified in detail and is supported by relevant evidence. This portfolio of evidence is then submitted for assessment and the possible award of academic credit. Alternative methods of assessment of evidence may be available but need to be discussed with the appropriate Admissions Tutor.

Fees and Financial Support 2017/18

Our fees for 2017-2018 will be **£7,750** per year for full-time undergraduate courses. For full-time postgraduate courses the fees are calculated on a credit basis.

In order to support higher education students with course fees, a number of sources of financial assistance are available from both us and the Government to help you with your fees and living expenses.

UCP Financial Incentives to aid study and development

A Global Scheme payment of £500 will be made to 2017/18 entrants on successful completion of the academic year. In addition those from low income households will receive £500 at the end of the first semester to support their studies. It is expected that students can use these funds to participate in field trips, events to enhance their studies and resources for their courses.

Full-time Degree Level students

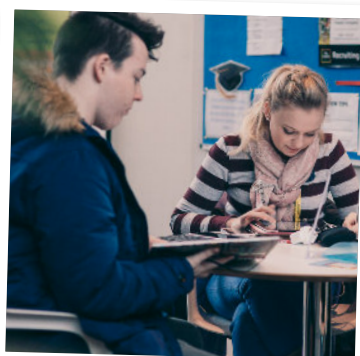
If you're starting a full-time higher education course, the main types of financial help you may receive are:

- a Tuition Fee Loan to cover your fees in full
- a Maintenance Loan
- a bursary from your university or college

Tuition Fee Loan

New students and most continuing students, who started their courses on or after 1st September 2013, can apply for a Tuition Fee Loan of up to £9,000 per year to cover the full cost of tuition. Student Finance England will pay the fees directly to the University Centre and you will not have to pay back this loan until you have finished your studies and are earning over £21,000 a year (information is correct at the time of print).

If you leave during your study, Student Finance England may not cover all costs.



Maintenance Loan

Full-time students can apply for a Maintenance Loan from the Government to help with living costs. These are paid into your bank account at the start of each semester. The amount of Maintenance Loan you can borrow depends on your circumstances, including your household income, what year of study you are in and where you live.

Repayment

Tuition Fee Loans and Maintenance Loans are rolled into one for repayment purposes. You only pay back your loan once you've left university and are earning over £21,000. Your monthly repayment will be based on how much you earn, not how much you borrowed. You will repay 9p for every pound you earn over the £21,000 repayment threshold. So if your salary is £25,000 a year, you repay nine percent of £4,000, which works out as £30 a month. Financial calculations are based on 2015/16 criteria.

Other Financial Help

In addition to the above, you may also be eligible for one of the following sources of financial help:

- Disabled Students' Allowances (DSAs)
- Parents' Learning Allowance
- Adult Dependents' Grant
- Childcare Grant
- Child tax credit

Students should visit the Student Finance England website for more details www.gov.uk/student-finance

Information provided is correct at the time of print but may be subject to change due to government priorities and policy.



International Students

If you wish to study on one of our degree programmes, you will be here under Peterborough Regional College's (PRC) sponsor licence. Fees for degree and foundation programmes are £8500 per annum when studying at University Centre Peterborough.

Why study with us?

As a student at University Centre Peterborough you will add to a vibrant and diverse community dedicated to supporting and developing our students.

Quality

- UK Border Agency (Home Office) Sponsor status held by Peterborough Regional College
- Our courses have internationally recognised accreditation
- Highly skilled and professionally qualified teachers, dedicated to your progress
- British Council Accredited English Language courses delivered by Peterborough Regional College
- Induction and orientation programme to introduce you to the campus and the city
- International social and cultural programme to help you apply and enjoy your studies
- International Office at Peterborough Regional College always there to support you

Learning

- Small teaching groups ensure a high quality learning experience
- Outstanding individual student support
- Competitively priced course fees for high quality education

Entry Requirements

All students require a UKVI IELTS or equivalent English Language qualification to be eligible for a course. The minimum scores required are:

- English as a Foreign Language – IELTS 6.0 / 6.5 required dependent on course
- We may still accept you with - IELTS 5.5, however you will be expected to undertake an English qualification alongside your degree. Arrangements for this will need to be made with the International Office at PRC.

Please note that all applicants will be interviewed using Skype. If you are in the UK when you make an application you will be invited to the campus for a face-to-face interview.

Accommodation

If you need help with accommodation, our International Team will help you find a place to live during your stay in Peterborough. We offer three types of accommodation:

Half board (Home stay host) – providing own room, bed and breakfast and evening meal. The cost of this is approximately £120 per week (inclusive) paid 4 weeks in advance.

Self catering with home stay host – own room in family home where you will provide and cook your own food (these places are limited). The cost of this is approximately £95 per week paid 4 weeks in advance, all bills included except telephone.

In addition you may want to stay in the Taverners Hall, our student accommodation. For more details visit www.tavernershall.co.uk or email info@tavernerhall.co.uk or call

For more information about courses, including course content and entry requirements, please contact ucp.enquiries@anglia.ac.uk.

If you have enquiries specific to international study then please contact the International Team on: +44 (0) 1733 762292 or +44 (0) 1733 762293 or email international@peterborough.ac.uk



Supporting You

Any degree demonstrates your ability to think and work independently and you will develop important skills in communication, numeracy and information technology. These are the qualities that many employers look for when recruiting. We also support you in developing your business acumen as many of you may wish to start your own company or work in a freelance capacity.

Whatever your reason for going on to Higher Education, we are sure to have a course that meets your needs. Maybe you want a university education qualification to build a new career, or to move to that next step on an existing career path? Studying for a formal higher education qualification can increase your employability, your lifetime earnings and could help you find a fulfilling job.

UCP is committed to ensure that all students are catered for. Students with special needs are given appropriate support to enable them to make the most of the educational opportunities available. Our building has been carefully designed with the needs of disabled students in mind and together with Anglia Ruskin University we have a team of experienced advisers to help students obtain the necessary support they need. Any potential students who are concerned about their particular situation are welcome to contact us for a confidential conversation. UCP has its very own Student Support Centre to ensure that all student needs are catered for. A team of Student Advisers are here to support you with your academic life and

educational needs. Throughout your time at UCP you'll also have a personal tutor who will listen to you, encourage you and support you, as well as helping you maximise your academic opportunities.

From extensions to mitigations to assisting with Student Finance and study needs, we are here to help!

Whatever your status as a student at UCP you will not be alone – a significant proportion of the students here are 'mature' students and we have a thriving and growing group of students straight from school. We also have those who are returning to education to enhance careers and build up their professional development portfolio often being sponsored by their employer. Whoever you are we are well equipped to understand your needs. We value your various backgrounds and life experiences and recognise that you will bring a wealth of experience and practical knowledge and skills to our courses.

One of the main worries mature students have is that they won't be eligible to study for a degree. A great number of UCP students are those who have returned to university along a non-traditional route but have life or professional experience. Applicants who do not qualify through standard academic routes are welcome to contact us to discuss admission based on previous qualifications and experience. If you do require further study we would recommend that you look at Access to Higher Education courses which are widely accepted one year level 3 courses.

"Being a mature and disabled student I did have my concerns about not fitting in. UCP have a wide range of learners, which gives it a great atmosphere for all ages. They offer very good wheelchair access throughout the building as well as at social events. I would recommend anyone to come and study at UCP as we have great lecturers and support networks for students."

"At UCP the support I have received is amazing and staff are always on hand and willing to support any needs that I have. As a disabled student I have had some issues with my personal life and have needed extensions and other exceptions. Because the university is smaller than others, tutors and staff are able to offer 1 to 1 sessions to make this support and guidance possible."

UCP also offers an extensive Virtual Learning Environment (VLE) and access to Anglia Ruskin University libraries via online resources and our Guild House campus on Oundle Road, Peterborough. If you still are a little worried about the skills needed for academic study rest assured as we have a team of lecturers delivering a matrix of study skills which include Harvard referencing, essay planning and seminar confidence boosting sessions. Just remember we are here to help!

The Library+ at Peterborough Regional College is an excellent learning and resource centre and is available for you to use and to help with your studies. Facilities include a large drop-in PC Centre providing access to the Internet and Microsoft Office as well as many other software packages; a wide range of books for reference and loan; newspapers, journals and e-journals; group and silent study areas; facilities to watch DVDs; photocopying facilities; and a selection of stationery for sale. The team are always pleased to help you use the various services available and can offer useful advice to help you find the resources you need.

As an institution, University Centre Peterborough has received a number of accreditations. One such accreditation is the **matrix** Standard: this is the unique quality standard for organisations to assess and measure their advice and support services, which ultimately supports individuals in their choice of career, learning, work and life goals.



Another award UCP was proud to achieve was the Customer Service Excellence standard, which has a particular focus on delivery, timeliness, information, professionalism and staff attitude, and proves the dedication that UCP has to all of the students.



Student Ambassadors



Arthur Jones

Being Research Ambassador for UCP has enabled me to develop many of the transferable skill sets I will be able take with me upon graduating; I've organised conferences, given presentations to the AoC, had my work featured on academic resources, created advertisements for local events, written conference reports, and ultimately I am familiar with undergraduate publications and how they can benefit me and my job prospects. Being a Research Ambassador has benefited me a lot more than I ever expected and I am very grateful for this opportunity!

Kaz Maltby

Being a student ambassador has definitely made me feel like a big part of UCP and more personally has helped my confidence grow. I help out with study excellence sessions and attend meetings where I get an insight into UCP, which is a great opportunity that most students do not have. Being a voice for other students is a great feeling, and getting involved in activities such as Open Day events means I have gained new and important skills from this role. I have also made great friends and have got to know many people outside of my course.



Debbie Williams

Being an ambassador at UCP has given me the opportunity to support and promote the university to prospective and current students. It has allowed me to learn new skills that will be invaluable after I graduate and has increased my confidence. I have been able to put across my opinion and the opinion of students at various meetings and have gained an insight into the way UCP is run. It has been a thoroughly enjoyable and rewarding experience so far.

Laura Setchfield

I recently became a welcome ambassador for UCP and initially applied for the role as a first year student. I know how daunting it is to start at university and I wanted to be able to help new students feel more at ease with the change. I also wanted to help promote UCP to prospective students. Being an ambassador is great, it has built my confidence and I've found that I have come out of my usual comfort zone. I've been able to build more skills and knowledge working amongst a great team of people. I love working beside the other ambassadors, they are very friendly and welcoming. I'm so glad I applied, and I'm looking forward to what the next year will bring in this role.



Maise Hunns

I recently was instated as Communications Ambassador at UCP. I applied for the role because it involved a lot of social media and marketing of the University including contribution to the new website and writing press releases for events. This has allowed me to become more involved with UCP and links in with my course BA (Hons) Multimedia Journalism.

All of the other ambassadors are very friendly and you feel as if you are part of a little family. I have also learnt invaluable skills and gone out of my comfort zone which has helped to build my confidence. I am enjoying it so far and I'm looking forward to gaining more experience..!"



Sumeet Kaur

I wanted to become an Ambassador to gain some experience for my CV but now I think it has given me a lot more than just experience. As soon as I started this role my confidence increased. I started speaking about my experience at UCP and sharing what other students could benefit from. This worked the other way around too as I got to speak to other students from different courses and learnt from them. The role of being an Ambassador came naturally since I enjoy studying here and I can feel the difference UCP has made for my studies. Altogether it's a rewarding experience and I have enjoyed every bit of it.



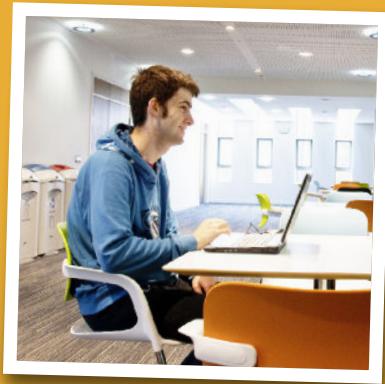


Why Choose us

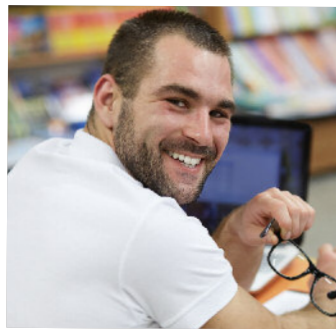
University Centre Peterborough currently has around 850 students on over 30 different degree level programmes, including Archaeology, Business and Accounting, Computing, Construction, Education, Engineering, English Literature, Multimedia Journalism, Biosciences, Media and Performing Arts. The University Centre is part of a strategic aim to develop this provision further in order to meet the growing demand for degree programmes in the city.

The ultra modern and contemporary £10 million University Centre located on Peterborough Regional College grounds in a joint venture with Anglia Ruskin University has a specially designed 92 seat lecture

theatre, a range of multi-purpose/size seminar and teaching rooms, state-of-the-art computer rooms, a cafe and several social areas. In addition those on the Multimedia Journalism and Media degrees have access to the state of the art Media and Journalism Satellite Centre and students on the Sports Coaching degree have access to a state of the art gym facility and testing lab. Courses provided at UCP help students acquire knowledge and skills relevant to local businesses, industries and public services. The University Centre also provides services direct to the business community, aiding innovation, product and service development and the 'up-skilling' of the local workforce.



Why choose to study at University Centre Peterborough?



Supportive Environment

We are dedicated to your success and will do everything in our power to help you achieve your goals. If you find yourself in need of some extra help with your studies we have a number of dedicated members of staff to help you with any queries or concerns, or even just to lend a supportive ear before and during your time with us. Our small class sizes allow the lecturers to get to know you personally and our students will be the first to agree that your knowledge and opinions are valued. Student Ambassadors, the Student Council, and a Student Officer ensure that we respond to your needs and involve you in the decision making processes. We actively encourage societies and place a great deal of emphasis on the student voice.

Expert Tuition

At University Centre Peterborough you will learn from approachable and supportive lecturers that are highly qualified and experienced in their fields and who are dedicated to helping you achieve your ambitions. Students praise the guidance they receive from their lecturers even when they have graduated. Our strong track record in the National Student Survey (NSS) is evidence of our commitment to quality and the student experience.

Employability

Peterborough is a diverse city with a wide range of careers available just waiting for talented people to discover and one of our major aims is to grow that talent for the city. We have excellent links with local and regional employers and strongly encourage our students to gain practical experience in their chosen fields. Practical experience allows you to develop your skills and confidence, add experience to your CV and provides you with excellent opportunities to network and acquire contacts in the business world. Our tutors are here for you whenever you need them to help and guide you, whether it be finding a placement/internship or giving you advice on what exactly to include in a CV to make you stand out from the crowd. We promote volunteering in year 1 of your studies and then support work placements and enable part-time employment related to your course.

UCP Successes

At UCP we are incredibly proud of everything our students achieve throughout their studies.

We have excellent links with local businesses for placements, paid internships and post-graduation employment (BGL/ Compare the Market, city schools, Larkfleet, City Fibre, Saffery Champness and Peterborough Cathedral to name just a few). We also have effective engagement with the third sector with our Criminology students engaging in initiatives for Crimestoppers, and others working through the Heritage Lottery Fund to promote heritage and its accessibility for young people. Others support our Children's University programme of events. This also enables students to develop original research areas for their dissertations and develop the necessary skills to progress to master's study.

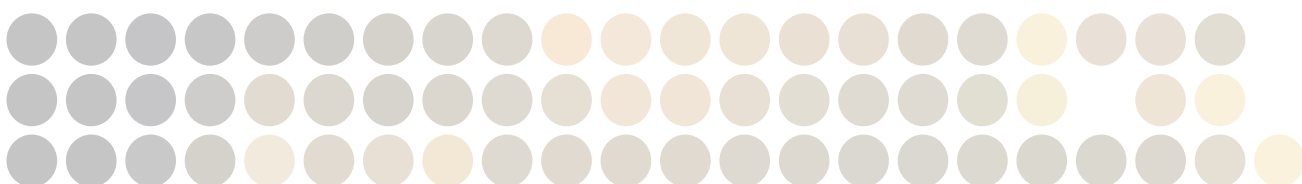
Our progression rates into employment or higher study are good with many students working in their chosen fields and developing their CV's alongside their studies. Our Computing degree students have also had success in industry alongside their studies when they were offered a 12 week paid internship with national software company BGL Group who run the Compare The Market website. Some of these students are subsequently offered a full time job after graduation on the strength of their performance. We work closely with BGL who are continuing their recruitment by offering more Computing Degree students placements. Other past internships have included work with the POSH and Living Sport to coach in local schools. As a way to help students find employment, each year we hold Employability Days combining lectures, job fairs, LinkedIn workshops and CV and cover letter workshops. Companies are keen to work with us to develop graduate recruitment opportunities.

Choosing a career in teaching is a popular choice for many of our graduates either through employment at Peterborough Regional College or by undertaking further study on PGCE courses. One successful scheme has been the Academic Mentor Scheme launched by Ormiston Bushfield Academy, where 10 of our students work as mentors and intervention workers. This scheme and opportunities to run activities for the Children's University has been truly beneficial for those wishing to pursue a teaching

career. In 2016 we launched our Graduate Recruitment Initiative which supports early career academics and teachers. Within this 50 % of the cost of a Masters is covered and successful applicants gain 10 hours a week teaching in their first year with the option of becoming full-time on successful completion of the scheme.

We have embedded a successful Student Ambassadors scheme to ensure effective and prompt support for students because let's face it, who understands a student better than a student? Our Ambassadors develop transferable skills and reflective practice which enhances both their employability and academic acumen. It's a flexible role that doesn't impact on their studies, but provides the opportunity to work at open days, school visits, UCAS fairs and offer guidance and support for their peers. In 2015 we also created two new Student Scholarship Ambassadors with the remit of selecting student work for publication and dissemination. They have had think pieces published and attended numerous conferences. We also now have a Student Comms Ambassador to enable effective use of social media and engagement. The Undergraduate Research and Design Conference in Engineering and Computing is an annual event that allows students to showcase their work to employers. Companies are identifying and supporting the development of a future talent pool and many are recruited following this event. We also hold a Social Sciences Conference in December which enables students to get feedback on their dissertations and a Sports Undergraduate Conference runs in May as well. In December Social Science students participated in a Dissertation Research Conference seeking feedback from their peers and expert panels. We not only develop you for employment at UCP but also for higher study.

Our National Student Survey (NSS) results are impressive, with BA (Hons) Psychosocial Studies achieving a 100% satisfaction rate in 2015. Overall satisfaction at Peterborough Regional College was 90 % which is significantly above benchmark. Overall degree classifications remain high, with 100 % of engineering students achieving 2:1 or above in 2015. 100 % of Psychosocial students achieved a 2:1 or above degree classification.





Our Foundation Degrees have a great success rate and our FdA graduates have gone on to secure inspiring roles across a number of sectors. Progression routes have included front-line service as Special Constables with the Cambridgeshire Constabulary and First Responder Trainers for the Ambulance Service. Graduates have also moved into education with some becoming Learning Support Workers at Peterborough Regional College, and others have moved into the Early Years sector. Many now take the BA Education top-up and through School Direct gain QTS in their schools successfully transitioning from teaching assistant to teacher in a supportive environment.

Our students are encouraged to take part in activities outside of their studies. Three students won awards for 'Best Presentation' at the annual Anglia Ruskin University Comparative Criminal Justice Conference. Four graduates had their work selected for presentation at the British Undergraduate Research Conference in March 2016. There is extensive volunteering across the social science provision which has enhanced student CVs and employability.

Volunteering and skill acquisition is common place across the centre as many students enhance their CVs and confidence by supporting Coding Clubs for schoolchildren, offenders through the YMCA gym initiative and Victim Support and Rape Crisis. Archaeologists were engaged in a community excavation at Fane Road to build skills and heritage experience. They are also supporting the Peakirk Millennium celebrations. Developing their practical skills has certainly benefitted the students as in 2013/14

50 % of Archaeology graduates were earning above the average UK graduate salary within 6 months (DLHE)

We work with our Sports degree students to provide a Sports Council, with a mission to promote sports, health and wellbeing to all UCP students. This actively promotes the achievements of teams and individuals and seeks opportunities to engage in national, regional and local events e.g. Sports Relief, Race for Life, and the Dragon Boat Race. We support both competitive and recreational sports and work closely with Active Anglia.

As part of Peterborough Cathedral's planned celebrations for its 900 year anniversary in 2018, the Heritage Lottery Fund has awarded a grant for the "Peterborough 900: Letting it speak for itself" project. Over the duration of this project UCP students have been involved in a number of opportunities including: Management and Education Internships, an Arts and Photography competition, Cloister Archaeology, a Library project with an online catalogue, the creation and maintenance of a website and Media students have taken an active role in the creation of educational videos and films. An Accounting and Finance student was appointed as a project manager for 2014/15 gaining valuable insights and additions to their CV. An Archaeology student undertook an internship as an Education Officer and from this gained full-time employment at Buckingham Palace.

So there's lots going on at UCP and it's all to benefit the student body. So come along, join in and achieve your potential.

Honorary graduates

Mike Greene

Honorary Doctor of Education

Mike Greene is a self-made millionaire who grew up in Peterborough and attributes his success to starting work at the age of seven. In 2011, he took part in the Channel 4 programme Secret Millionaire, returning to the council estate where he spent his childhood. Mike volunteered at a nearby play scheme, the New Ark Adventure Playground, and at Time Stop, a YMCA hostel in the city to see if he could help. When he revealed himself as a 'secret millionaire', Mike wrote out a cheque to New Ark which saved it from closure. With his help and advice, New Ark is now steadily building up its cash reserves. He also wrote a cheque for Time Stop to provide computer equipment that would help with job searches, CV writing and application letters. Three years down the line, both local charities are still going strong, thanks in part to Mike's donations, and he continues to give his time, energy and expertise to both.

In 2012, Mike took a sabbatical from work to raise over £100,000 in just 100 days for 100 charities based in and around Peterborough. Among the causes he supports locally are Anna's Hope (for children with brain tumours), Phoenix School, and Family Voice. He continues to support these charities, in partnership with localgiving.com and Cambridge Community Foundation, as well as thousands of other organisations nationally. Through the process of being a 'secret millionaire', Mike says he has learned something rare and important:

"It's more rewarding to give it than it is to earn it." For his inspirational support for local charities and enterprises and the opportunities he continues to create for local people, we are delighted to welcome Mike Greene into our Anglia Ruskin community.

Louis Smith MBE

Honorary Doctor of Health Sciences

Louis Smith is a British gymnast specialising in the pommel horse famous not only for his success at the 2012 Olympics, but also for winning Strictly Come Dancing in 2012. He lives in Peterborough and is a member of Huntingdon Gymnastics Club.

Louis is also a four-time European Championships silver-medal winner, taking his first as a senior in Milan in 2009, despite a broken thumb, before taking both the individual and team silvers in 2010. Another silver came at the World Artistic Gymnastics Championships in Rotterdam in 2010, and a bronze the following year in Tokyo — the only medal won by the British team at the 2011 championships. Then, in 2012 he captained what became the first-ever British men's team to win a European Gold Medal, also taking Silver in the individual pommel horse.

On top of all this, Louis recently published an autobiography: Louis: My Story So Far, in which he describes his transformation from "a troublesome kid whose appetite for mischief knew no bounds", to Britain's most successful gymnast ever. Despite still being only 25, Louis offers this sage advice: "Set yourself clear, achievable goals, and go for them: success comes with hard work, discipline and self-motivation."

Louis was appointed an MBE in the 2013 New Year Honours for services to gymnastics.

Warwick Davis

Honorary Doctor of Arts

Standing at just three feet six inches tall, Warwick Davis is now the world's leading short actor. On the screen and on the stage, he has starred alongside the likes of Robert Powell, Alec Guinness, Alan Rickman, Jennifer Aniston, Val Kilmer, David Bowie and Harrison Ford, so we are all familiar with his screen presence. Besides Stars Wars, his film credits include playing the title roles in Willow and the Leprechaun series, and Professor Filius Flitwick in the enormously successful Harry Potter films. Warwick has also starred as a fictionalised version of himself in the sitcom Life's Too Short, written and directed by Ricky Gervais and Stephen Merchant. Most recently, he has appeared on television in the moving documentary The Seven Dwarfs of Auschwitz, featuring the Ovitz family — a touring Jewish musical troupe.

In 2010, Warwick published his autobiography, Size Matters Not: The Extraordinary Life and Career of Warwick Davis. In the foreword, movie producer and director George Lucas says of him: "Warwick has already led an extraordinary life — actor, director, businessman and devoted husband and father. He has undergone tremendous physical and other challenges and has become an even stronger force of nature by overcoming them. For all that he has done and for his innate decency and integrity, he's my hero."



UCP Alumni

Sol Ilett – BSc (Hons) Computing and Information Systems

I'm currently working at Newcastle Building Society developing online savings applications in C#. UCP has provided me with a wide range of languages and technologies which have allowed me to secure my current role. I also think my initial success is somewhat down to the lecturers. They are sound and are always happy to offer guidance and support. This really helps when you're panicking about deadlines and is one the UCP's best assets. I also gained skills at UCP which encouraged me to go out and proactively learn. This meant I could learn more advanced patterns and code which has now lead to my first salary increase at work. Some of the skills I learnt at UCP, that I thought would be the least beneficial have now become things I have to consider every day.



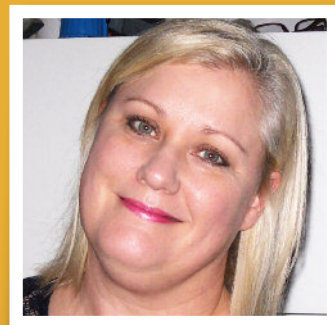
Eddie Njenga - BA (Hons) Multimedia Journalism

Before joining University Centre Peterborough I did not see myself doing what I am doing now. I am currently running my own business consultancy firm that helps small businesses with advice as well as other services like website and graphic design. I also run an online news website which has the latest updates on Kenyan news for the Diaspora and I organise motivational networking events as well. These are skills that I have gained from my experiences at UCP. While I was in Peterborough I had so much support from all my lecturers and I was able to regularly exercise the skills that I learnt during my tenure there. For example we learnt about video journalism and my lecturer helped me start a YouTube channel, we learnt online journalism which helped me start my fascination of web design. We also had many guest lecturers, one of which was a head marketer from Bauer Media. I still regularly speak to him and I have now completed my masters in marketing following his active support.



Odette Smee – BA (Hons) Sociology

Since leaving UCP in May 2015, life has been busy and active. I've enrolled on various assault courses, fun runs and bootcamps; I feel like I have a new lease of life! During early October, I started a full time Masters course at ARU in Social Policy which is very hard work and hopefully worth all the blood, sweat and tears. Our course has three trimesters and finishes in Aug/Sept, so goodbye summer holidays. I think doing both degrees has improved my employability (and starting salary) and I don't anticipate any challenges gaining employment. My options are more varied now so I have to decide which way to go: government, business, education or healthcare. Outside of university, my quality of life has improved probably due to my increased happiness and confidence. My advice would be to aim high with your next move; be courageous, be ambitious and be determined.



Scott Roberts - Computing and Information Systems BSc (Hons)

During my time at UCP I learned a variety of new skills including programming languages and software engineering techniques that have assisted me in my progression. Also the ability to teach myself new technology quickly has been a vital trait I gained whilst at UCP. This inspired me to challenge myself with mobile application development, which at the time was a brand new field of computing.

After leaving UCP with a first-class honors degree in Computing and Information Systems I used the skills I had gained to get my first job within 2 weeks. To the present day I have worked in mobile application development for over 5 different companies ranging from companies in the Fortune 500 list to big name brands. I have gone from employee to contractor to consultant and eventually business owner in a few short years. Success in every challenge I face stems from the knowledge I learned during my degree at UCP.



Employability

AT UCP IT DOESN'T JUST HAPPEN WHEN YOU LEAVE

Taking time out in industry or working alongside your studies has multiple benefits, including practical experience of working in a business environment. You'll also gain and improve transferable skills such as time-management and teamwork, both highly valuable to your studies and your future career. Statistically employers are more likely to employ candidates who have practical experience, especially if they've been on placement at their company before. (According to the NUS). At University Centre Peterborough we encourage you to look for practical work experience, with many business links already in place. Our tutors will always be there to help you attain the valuable skills and attributes that will help you gain employment in the future.

Melissa Grosse – English Literature.

Whilst in my first year of studying on the English Literature course, I was given the opportunity to work as an Academic Mentor within the English department at Ormiston Bushfield Academy. Aside from the obvious financial benefits, the position was brilliant for a range of things such as developing leadership and organisational skills, gaining insight into the inner workings of a school and taking a first step into a professional environment. There are many opportunities like this at UCP, both external and internal, which allow for professional development alongside academic studies, and, if taken, will stand out to future employers.



Emily Rickell – Archaeology and Landscape History

I recently gained an exciting job as Visitors Services Assistant at Buckingham Palace through the efforts of myself and UCP. Having the confidence to apply for the job in the first place has come from tutors inspiring me to work hard so I can reap the rewards after my degree. An example of this is having practice sessions of delivering presentations about various topics. Practice makes perfect. Having CV writing workshops allowed me to present a fluent and concise application to Buckingham Palace. This meant that the reader could understand me as a person just by reading the CV.

The job position will allow me to experience a varied environment as I will be dealing with hundreds of tourists/visitors every day. I will be aiming to meet their different needs whilst remaining composed and presentable. This will test everything that I've learnt at University Centre Peterborough and I feel I am more than prepared to face the reality of the wider world when I finish in May 2016.



Chloe Brown – Business Management

I have developed skills while studying which will benefit me greatly in employment. My literacy skills have advanced and I have more confidence in myself due to the support received from my lecturers and peers. After I have completed my degree I want to work in the London Lloyds Market as a broker for yachts or jewellery. I would also like to complete an MSc although I am still undecided on what I want to study.

"When it comes to learning I love the Gandhi quote 'Live as if you are going to die tomorrow, Learn as if you are going to live forever'.... Education and learning are crucial to growth & success and can help individuals leap frog the queue for the best jobs. The more I work with UCP, the more I am impressed with the courses, facilities and focus that I see"



Employers



Alex Shaw at Comparethemarket.com

"Comparethemarket.com as a local employer of software engineers sees huge value in engaging with students in computer science. Our industry is evolving rapidly and it's the responsibility of professional organisations such as ours to help demonstrate the variety of roles and work available along with supporting universities to help keep content current and aligned to business requirements. Through our engagement with UCP we have seen a number of very talented students join our team and we hope to be able to continue and build on this into the future."



Sarah Muxlow at Saffery Champness

"As a top 20 accountancy firm we are always on the lookout for bright new talent. Working with UCP has enabled us to employ students on part time contracts during their studies, providing great experience for their degrees and CVs. We also take applications from the best students to our full time graduate training positions on completion of their degree. We consider students with a wide variety of courses not just accountancy."

ARCHAEOLOGY AND LANDSCAPE HISTORY BA (HONS)

KEY FACTS

Faculty	Arts, Law & Social Sciences
Location	University Centre Peterborough
Duration	3 Years
UCAS Code	V400
	Part-time study available

Course Overview

BA (Hons) Archaeology and Landscape History, offered at University Centre Peterborough, examines British history as represented in the archaeological record and landscape from prehistoric to modern times.

It examines theory and practice in archaeology and landscape history, providing students with the knowledge and skills needed to work in archaeology, museums and archives. This course offers an exciting opportunity to study the increasingly popular subjects of archaeology and landscape history together by offering a multi-period, skills and techniques approach. This will allow you to understand the development of human activity in northern Europe, from prehistory to the 21st century.

Students can also look forward to the highly vocational module Ancient Technologies, designed to ensure graduates have the hands-on skills valued by the heritage sector.



Module guide

Year one core modules

- Principles and Methods of Archaeology and Landscape History
- Themes in Archaeology
- Analytical Techniques for Forensic Scientists
- Western Civilisation 1 and 2
- Archaeological Heritage Management
- Themes in Landscape History

Year two core modules

- Archaeological Desk-based Assessment
- Ceremonial and Ritual Landscapes
- Prehistory and European Wetlands
- Science in Archaeology
- Placement and Portfolio
- History Today: Methods and Approaches

Year three core modules

- Urban and Industrial Landscapes
- Ancient Technologies
- Buildings in the Landscape
- Major Project

Assessment

The course is assessed in a variety of ways including, essays, reports, reflective log books, exams and practical placements.

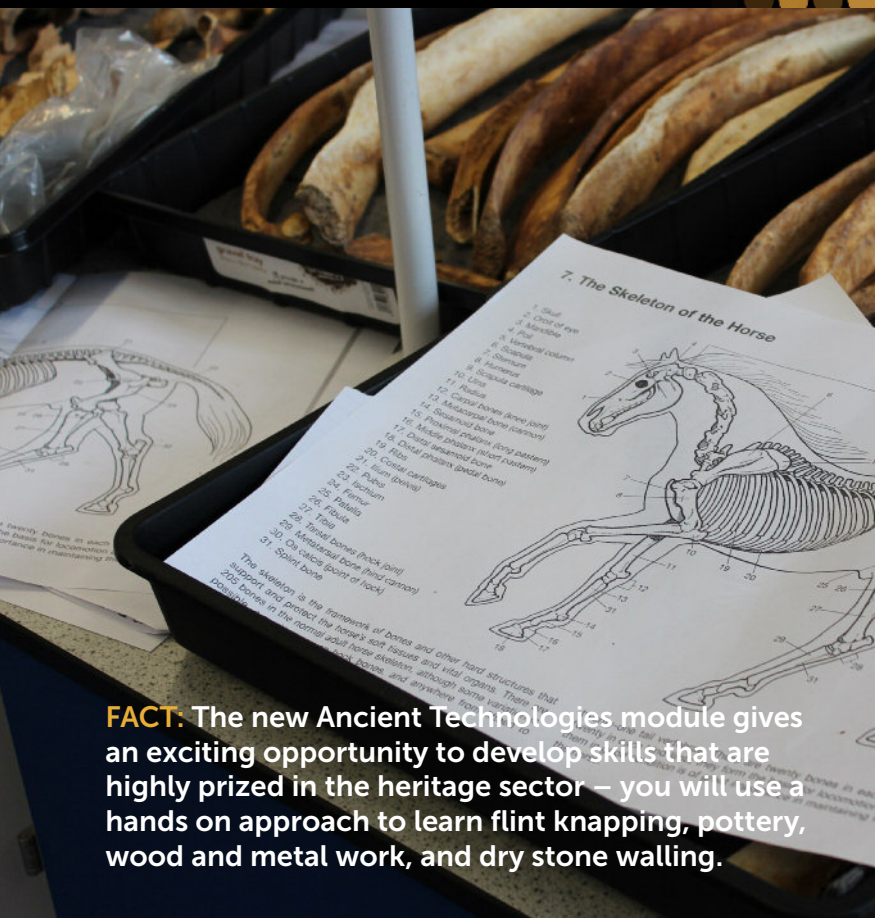
Special features

One of the most significant discoveries of Bronze Age log boats occurred in 2011 at Must Farm near Peterborough. This has been further enhanced by the discovery of a Bronze Age village in 2015 and offers UCP students an insight to Bronze Age life through the material culture.

Associated careers

This course could lead to careers in archaeology (excavation, surveying, HER management); heritage (visitor services, care of collections, education), and teaching (history).

FACT: Greater Peterborough has a rich and varied heritage, and we have good links with several sites that host work placements.



FACT: The new Ancient Technologies module gives an exciting opportunity to develop skills that are highly prized in the heritage sector – you will use a hands on approach to learn flint knapping, pottery, wood and metal work, and dry stone walling.

Links with industry and professional recognition

We currently have several formal partnerships with organisations in the region. These include Sedgeford Historical and Archaeological Project and Vivacity. Through these partnerships you will gain the opportunity to excavate and work in the heritage sector, giving you an advantage when applying for employment.

Entry Requirements

Full Level 3 qualification(s) required; e.g. A level, BTEC or Access to HE. GCSEs or Level 2 equivalent also required; GCSEs at grade C or above in English, Mathematics and Science. Please note AS levels are acceptable only when combined with other qualifications. Students who do not qualify by any of these routes are invited to contact us to discuss admission based on previous qualifications and experience.

STUDENT PROFILE

Archaeology and Landscape History

Emily Crouch - Studying Archaeology and Landscape History at University Centre Peterborough has given me the essential skills needed to pursue further employment in a wide range of areas, not only directly in archaeology but also in fields such as conservation and heritage management as well as teaching. The second year module of Placement and Portfolio enables students to branch off into a specific area of employment that they are interested in as well as making invaluable contacts with professional organisations. The small class sizes provide a much closer, one-to-one teaching environment and the lecturers are enthusiastic about the modules they teach, delivering interesting and knowledgeable lectures. The techniques and practical skills learned from studying Archaeology and Landscape History will be crucial when seeking future employment.

CRIMINOLOGY BA (HONS)

KEY FACTS

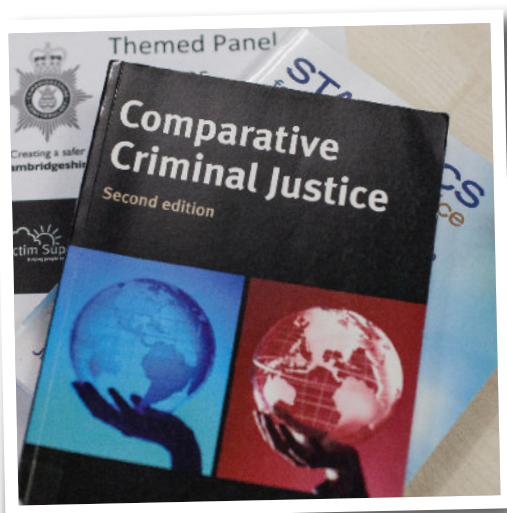
Faculty	Arts, Law & Social Sciences
Location	University Centre Peterborough
Duration	3 Years
UCAS Code	M900
	Part-time study available

Course Overview

You will consider; whether criminal behaviours are learned or inherent, social order and resistance to it and measures that are available to sanction prohibited deeds. The course is designed to provide a range of skills which will equip you with far-reaching knowledge of the agencies and processes included in the criminal justice system.

The course combines theoretical and criminal procedural frameworks with the intellectual challenge of social science giving the opportunity to contemplate and reflect on some fundamental questions of human behaviour: Why do we create laws? Why do people break them? Why do we respond as we do? How can we prevent future crimes from occurring?

Using real-life case studies, theoretical perspectives and the framework of the law, you will tackle the phenomena of crime from an exciting and contemporary standpoint.



Module guide

Year one core modules

- Adventures in Criminology and Crime News
- Adventures in Criminal Justice
- Skills for Criminal Justice
- Conflicts and Contradictions in Crime
- Media and Crime
- Political Ideologies and Social Controversies.

Year two core modules

- Trials and Errors
- Retribution, Restoration and Rehabilitation
- Violent Crime: Body and Mind
- Project Preparation

Year three core modules

- Major Project
- Youth Justice Controversies
- Comparative Criminal Justice
- Investigative Psychology (Optional)
- Sex, Sex Offending and Society (Optional)

Assessment

Assessment is carried out via a very broad mix of methods including case studies, presentations, essays, patchwork texts, portfolios, poster presentations, data analysis exercises, examinations, group projects and an individual major project.

Special features

- Student visits to local courts and the Old Bailey.
- Job-shadowing a Crown Court judge and other professionals in criminal justice.
- Guest lecturers from Crown Prosecution solicitors and other specialists from the field of criminology.
- Criminology Society.
- Volunteer opportunities with local agencies including Crimestoppers.
- Attendance at criminology conferences.

FACT: Trips throughout the year include the local prison, Comparative Criminal Justice conference, the Royal Courts of Justice and Old Bailey in London. Some students are now studying for their MA and many are working as Special Constables and Prison Officers

FACT: Several students have worked with Crimestoppers and launched the Peterborough Anti Cycle Theft campaign which led to the achievement of a National Award. Many of our current students are volunteering with the local probation services and work as intervention workers at local schools.



Associated careers

Our course offers a stimulating and rigorous opportunity to a wide range of students. Criminology graduates have embarked upon diverse careers in many fields, such as the National Probation Service, the Police, the Prison Service, Youth Justice, the Home Office, scenes of crime work, the court system, social policy, research and much more.

Entry Requirements

Full Level 3 qualification(s) required in a related subject(s); e.g. A level, BTEC, or Access to HE. GCSEs or Level 2 equivalent also required; GCSEs at grade C or above in English, Mathematics and Science. Please note AS levels are acceptable only when combined with other qualifications. Students who do not qualify by any of these routes are invited to contact us to discuss admission based on previous qualifications and experience.

STUDENT PROFILE

Zhane Gloster, Criminology BSc (Hons)

As UCP is smaller than most universities, the comfortable class sizes has allowed for me to develop my confidence - especially when making contributions in lectures. In terms of the Criminology course, I love the inclusion of optional modules, which have allowed me to tailor my learning experience according to personal interests. The lecturers have been great over the last three years and have always made themselves available for help and support regardless of the situation. I really feel that UCP was the perfect choice - it has helped me to develop academically and continues to encourage and support me in relation to future choices.

ENGLISH LITERATURE BA (HONS)

KEY FACTS

Faculty	Arts, Law & Social Sciences
Location	University Centre Peterborough
Duration	3 Years
UCAS Code	Q300

English literature is one of the most versatile subjects when it comes to preparing students for their chosen careers. Our graduates develop a wide range of valuable transferable skills much sought after by employers.

Course Overview

From science fiction to feminism, Anglo-Saxon to contemporary, this diverse course will allow you to develop your practical skills and a theoretical appreciation of a range of interesting texts. You'll explore the ways in which traditions in creative writing have evolved and how they impact on publishing practice today. You'll learn how to read both historical and modern works, with input from a range of guest speakers to ensure an interactive programme in tune with the needs of employers.

A degree in English will equip you with a wide range of skills that are particularly attractive to employers. These include:

- Communication skills: these include written skills developed through assessments (essays, portfolios, journals) and oral skills developed through seminar presentations and discussions.
- Critical and analytical skills: these will be enhanced through close reading of critical and literary texts and application of theories
- Problem-solving skills: you will learn to respond with agility and imagination to critical problems.
- Research skills: you will consult a broad range of print and electronic learning resources and learn how to synthesise, interpret, and respond to difficult material.
- Planning and development: you will develop and hone these skills as you prepare for seminars, organise your reading, and meet assignment deadlines.
- Interpersonal skills: as part of a learning community, you will work collectively and collaboratively in seminars and group presentations.

Module guide

Year one core modules

- Introduction to English Literature 1
- Introduction to English Literature 2
- Introduction to Literary Criticism
- Myth, Mystery and Metamorphosis: Classical and Biblical traditions in English literature.
- Introduction to Imaginative Writing

Year two core modules

- Dialogue & Debate: Shakespeare & Renaissance Drama
- Romantic Conflicts (1760s-1830s)
- The Victorian Experience: Texts and Contexts

Year three core modules

- Major Project/Dissertation
- Modernism and the City

Assessment

You are assessed by essays, examinations, professional development portfolios, individual and group presentations, and by dissertation.

Special features

The course team organise subject-related away days, such as theatre trips and a tour of Victorian and Elizabethan London. UCP students run their own award-winning Literature Society, which organises a series of guest speakers, workshops, and cultural and social events.

Associated careers

In addition to the most popular choice of teaching, our graduates go on to an extensive variety of careers, including journalism, television, radio, the music industry, arts administration, gallery work, fundraising, personnel work, publishing, librarianship, marketing, local-authority work, publicity, social work, tourism and IT-related industries.

Links with industry/Professional recognition

We have links and working partnerships with various cultural organisations, including Vivacity, Lottery Heritage Fund, Peterborough Metal and the Eastern Angles Theatre Company, with whom we have organised special events and professional development opportunities. We continue successfully to support students in securing work placements and



STUDENT PROFILE

Shabnam Mubarak - English Literature BA (Hons)

This degree has offered everything a Literature enthusiast requires: a journey of knowledge that begins at Medieval Literature and ends with Contemporary Fiction. The lectures are delivered with enthusiasm, which encourages and motivates us. The advantage of small group teaching is that the seminars, which are both informative and fun, can be tailored to support us as individuals. Above all, the lecturers and tutors have been extremely helpful. The knowledge and experiences I have gained through my studies has been priceless.

employment relevant to their career aims, in education, the media and other areas of interest to our students. Peterborough Regional College runs an active recruitment programme to employ UCP graduates, and a number of our former students are now successfully employed as lecturers within the college. We are also in partnership with a local academy which recruits our undergraduates as academic mentors, providing both employment and valuable classroom experience for those interested in teaching careers.

Entry requirements

Required subject(s): A level English, English Language or Literature at grade C, or a Level 3 access diploma (30 credits at Merit) in a related subject. GCSEs required: GCSEs at grade C or above in English, Mathematics and Science. Applicants who do not qualify by any of these routes are welcome to contact us to discuss admission based on previous qualifications and experience..

MEDIA STUDIES BA (HONS)

KEY FACTS

Faculty	Arts, Law & Social Sciences
Location	University Centre Peterborough
Duration	3 Years
UCAS Code	P300

Course Overview

Media Studies explores the media in national and international contexts, and prepares you to enter the global employment market and to have a significant influence on it.

The course structure will enable you to obtain knowledge of all different aspects of media topics including; the internet and digital media, video and film making, radio and sound production, print media and publishing, as well as looking at issues surrounding technology, society, popular culture, legislation, and the global information age.

The course integrates theory and practice with vocational relevance and experience. It enables students to grow intellectually and to develop a range of knowledge, skills and understanding through a mixture of theoretical as well as practical modules.

During their studies, students are encouraged to become critical and analytical thinkers so that they can keep pace with the changing demands of this dynamic sector.

Module guide

Year one core modules

- Media, Culture and Society
- Introduction to Radio
- Introduction to TV Studies
- Introduction to Video
- Decoding Media Texts
- Media and Technology

Year two core modules

- TV Genres
- Digital Media Theory
- Digital Media Practice
- Youth Culture and Media

Year three core modules

- Undergraduate Major Project
- Law, Culture and Technology
- Contemporary TV



Assessment

You will be assessed via portfolio, seminars, essays and practical submissions.


Associated careers

The mix of creative and factual modules ensures graduates have the complete skill set required by today's employers. On successful completion of this course you will be able to seek work in a variety of media-related areas such as; broadcast, online, print, production, radio, video and film.

Entry Requirements

Full Level 3 qualification(s) required in a related subject; e.g. A level, BTEC or Access to HE. GCSEs or Level 2 equivalent also required; GCSEs at grade C or above in English, Mathematics and Science. Please note AS levels are acceptable only when combined with other qualifications. Students who do not qualify by any of these routes are invited to contact us to discuss admission based on previous qualifications and experience.

Please note that this course is currently being validated and may be subject to change.



FACT: Following successful placements, students have progressed into employment and have achieved recognition in national competitions.



STUDENT PROFILE

Callum Whyman - Media Studies BA (Hons)

I chose a university that was local to me as I know Peterborough well and I wouldn't change my decision to study at UCP. I feel like there is something for everyone here. Meeting so many people in such a relaxed environment has been the greatest experience for me. Also the spirit throughout the whole campus is incredible. The Student Support Centre encourages participation and it is so easy to get involved with various activities that take place throughout the year such as employability days - their career service has been so useful for me, enabling me to talk to media businesses in my chosen subject field in and around the local area.

MULTIMEDIA JOURNALISM BA (HONS)

KEY FACTS

Faculty	Arts, Law & Social Sciences
Location	University Centre Peterborough
Duration	3 Years
UCAS Code	P500
	Part-time study available

Course Overview

This newly designed course offers a combination of writing and practical skills such as: shorthand, publishing production, video journalism, photojournalism, online journalism and other specialisms. This means our graduates are well equipped for a diversity of roles across the news industry.

You will be fully supported through a variety of team and individual projects to help you achieve your goals. The course is validated by Anglia Ruskin University and students complete a total of six modules in each year. Assessment is mainly by portfolio, with a small number of examinations.

Module guide

Year one core modules

- Law for Journalists
- Reporting Skills
- Introduction to Digital Media
- Advanced Reporting Skills
- Introduction to Magazines
- Introduction to Broadcast

Year two core modules

- Politics and the Media
- Shorthand
- Digital Publishing

Year three core modules

- Live News Production
- Research Methods
- Undergraduate Major Project
- Professional Practice

Assessment

Methods of assessment will include:

- Portfolio of work
- Commissioned professional briefs
- Essays and seminars
- Three modules have an examination as part of the assessment
- Internship

Special features

Guest speaker events with professional journalists are regularly organised by students and staff, and volunteer opportunities are available from a range of regional and national organisations and employers. Work placements are encouraged from the very beginning of the course and staff are on-hand to offer advice and help out with contacts. You will also have the opportunity to write and publish work in the student magazine to enhance your CV.

Associated careers

Career opportunities for journalists are broad and include working for print, broadcast and online organisations. As an example, there are opportunities to specialise in investigative or sports journalism.

Entry Requirements

Full Level 3 qualification(s) required in a related subject; e.g. A level, BTEC or Access to HE. GCSEs or Level 2 equivalent also required; GCSEs at grade C or above in English, Mathematics and Science. Please note AS levels are acceptable only when combined with other qualifications. Students who do not qualify by any of these routes are invited to contact us to discuss admission based on previous qualifications and experience.



FACT: Graduate employment rates from the course are high. To enhance student employability, the course offers numerous opportunities for paid work and bursaries with local businesses.



STUDENT PROFILE

Bethany Hutson - Multimedia Journalism BA (Hons)

I've wanted to study journalism since I was 10 years old but having dropped out of another university, I was apprehensive when first enrolling at UCP. I am now coming to the end of my second year, and I have enjoyed every module and element of my degree so far. The greatest advantage of studying at UCP is the support that you receive from your lecturers as it is a slightly smaller university. This support is something I feel that I definitely would not have received elsewhere. My lecturers have always been available to provide feedback and support throughout my studies, and I think that this is one of the main reasons for the grades that I have achieved thus far. If you're on the fence about university and worry that you'll become lost in a sea of faces, then I highly recommend considering studying at UCP. My experience has been nothing but positive and encouraging.

PERFORMING ARTS BA (HONS)

KEY FACTS

Faculty	Arts, Law & Social Sciences
Location	University Centre Peterborough
Duration	3 Years
UCAS Code	7W73

Course Overview

The Performing Arts degree will have a strong focus on movement and physicality and explores an interdisciplinary approach, fusing and connecting movement/dance, new media techniques, physical theatre and contemporary theatre practice. The course is designed to help you become a practitioner of physical theatre with you choosing the specialist path, whether as a director, performer, designer or administrator. The course will be structured over 3 years with students working on an average of 6 modules a year. The course has a 'learn by doing' ethos and you will work on exciting modules, taught by industry experienced professionals and experts in Physical Theatre practices.

Within each module and across the course, there will be a strategic framework embedding a range of activities including: practical sessions, practitioner demonstrations, peer delivery and learning, seminar-based activity, observed practice, academic presentations, workshops, performances, dissertations, and tutorials. Students are required, and supported, to



work with increasing autonomy with texts and other resources, such as digital media, production elements, and site-specific execution. We have excellent facilities including a studio performance theatre, rehearsal studio and lecture room.

Module guide

Year one core modules

- Performance Contexts
- Studio Performance
- Performance Skills: 1
- Digital Performance
- Performance Practices

Year two core modules

- Making Performance
- The Body in Performance
- New Media Performance
- Performing Shakespeare
- Performance Skills: 2
- Performance Writing

Year three core modules

- Major Project
- Professional Practice
- Special Subject
- Contemporary Texts
- Devising Performance
- Enterprise in the Creative Arts

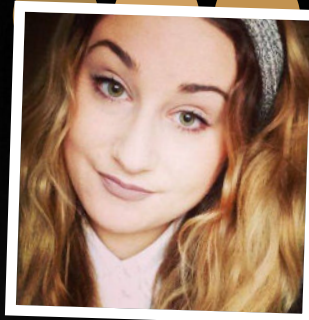
Associated careers

This Degree will lead naturally to a variety of careers in the performing arts industry such as theatre practitioner, teacher, performer, arts administrator, director, theatre project leader, designer and more.

Entry Requirements

Full Level 3 qualification(s) required in a related subject(s); e.g. A level, BTEC or Access to HE. GCSEs or Level 2 equivalent also required; GCSEs at grade C or above in English, Mathematics and Science. Please note AS levels are acceptable only when combined with other qualifications. Students who do not qualify by any of these routes are invited to contact us to discuss admission based on previous qualifications and experience.

FACT: An important feature of the course is employability. Through work placement opportunities and projects presented in the third-year Enterprise in the Creative Arts module, we encourage you to develop and reflect upon your skills which are attractive to employers.



STUDENT PROFILE

Emily Haslam - Performing Arts BA (Hons)

I joined UCP in the second year of the BA (Hons) Performing Arts degree at UCP and it was the best decision I have ever made. I have always had an interest in theatre but the course at UCP has opened my eyes to so much more than just theatre.

The lecturers have a comprehensive background in Performing Arts and offer invaluable expertise to UCP students. Throughout the course you are given the chance to learn a wide range of skills which can give you a great advantage when looking for a job in the industry.

PSYCHOSOCIAL STUDIES BA (HONS)

KEY FACTS

Faculty	Arts, Law & Social Sciences
Location	University Centre Peterborough
Duration	3 Years
UCAS Code	C880
	Part-time study available

Course Overview

Psychosocial Studies is a Social Science degree that explores the relationship between the self and society. This multidisciplinary course combines the focus on the individual found in psychology and psychoanalysis with the wider cultural and systemic concerns of sociology. It develops a rounded understanding of human behaviour with practical application to a range of substantive policy areas.

The modules are designed to provide you with a firm grounding in the fundamentals of; sociology, politics and philosophy, and in addition to social, health and developmental psychology. With this foundation in place, the course allows you to broaden and deepen your knowledge and understanding of the individual, the social world, and the relationship between them.

This course addresses important questions about the human condition. It will provide you with the intellectual tools to appreciate the complexities of how we can shape our social surroundings, as well as providing valuable vocational knowledge and skills. This course is taught in our modern and well-equipped classrooms, which presents the opportunity to acquire social science research skills in a 'hands on' way.



Module guide

Year one core modules

- Social and Developmental Psychology
- Issues in Child Development and Social Psychology
- The Sociological Imagination
- Political Ideologies and Social Controversies
- Sociology of Globalisation
- Sociology and the Self
- Making Sense of Gender

Year two core modules

- Social Research Methods
- Contemporary Social Psychology
- Knowledge and Belief
- Personality, Intelligence and Psychometrics
- Social Divisions
- Social Theory

Year three core modules

- Nature and Society
- Undergraduate Major Project
- Investigative Psychology
- Atypical Development
- Clinical Psychology

Assessment

Assessment is via a mix of examinations, essays, class tests, individual and group presentations, portfolios, academic posters and an undergraduate dissertation.

Special Features

- Very broad degree that leads on to a wide variety of careers
- Opportunity to conduct real-life social experiments
- Mentoring scheme and tailored tutorials support your studies

Associated careers

The intellectual disciplines delivered in this course are valued by employers in a wide range of sectors, including social research, policy, the criminal justice sector, health and related professions, social work, teaching, third sector roles and human-resource management. Social Science graduates have excellent career prospects and are more likely to be in managerial or senior roles. There is a good breadth of subjects in the first and second year and the ability to specialise in Year 3 gives you the opportunity to fine-tune your degree to suit a favoured career.

FACT: The Psychosocial Studies degree offers a broad range of modules that can lead to a wide variety of career and higher education options.



STUDENT PROFILE

Pamela Pooley - Third year Psychosocial Studies BA (Hons) student

Deciding to go to university is not easy for anybody, but for me as a mature student there were many factors which made this move even harder. I heard about University Centre Peterborough when I was searching for local universities and UCP helped to make the transition as smooth and easy as possible. It was nice to meet so many new people and face exciting new challenges. I am studying Psychosocial Studies because it combined two interesting subjects (psychology and sociology) and had relevance to my future career as a family/couples therapist. It is one of the most rewarding things that I have ever done – it's hard work but well worth it.

Entry Requirements

Full Level 3 qualification(s) required in a related subject; e.g. A level, BTEC or Access to HE. GCSEs or Level 2 equivalent also required; GCSEs at grade C or above in English, Mathematics and Science. Please note AS levels are acceptable only when combined with other qualifications. Students who do not qualify by any of these routes are invited to contact us to discuss admission based on previous qualifications and experience.

FACT: Our Psychosocial Studies course achieved a 100% Student Satisfaction rate in the Nation Student Survey (NSS) 2015

PUBLIC SERVICES FdA

KEY FACTS

Faculty	Arts, Law & Social Sciences
Location	University Centre Peterborough
Duration	2 Years
UCAS Code	L900
	Part-time study and January Starts available

Course Overview

FdA Public Service aims to provide the highly sought-after skills and knowledge that public services such as the Police, Prison Service, Fire Service, Ambulance Service, Revenue & Customs and the Armed Forces have identified as important for their employees to possess. It is designed to improve the academic capital of uniformed public service workers, although anyone working with the public would benefit from taking this exciting and challenging course. It provides an opportunity to learn about these public services directly through work-based learning and in the classroom. Modules focus on subjects such as leadership, interpersonal and presentation skills, disaster planning, workplace cultures, ethical practice, financing public services, politics and public service, deviance, forensic science, equality, and cultural diversity. The teaching staff includes lecturers who have previous experience of working in these sectors, and during your studies you will also be able to hear from, as well as interact with, a wide range of public service professionals. There is also the opportunity to continue your academic studies by progressing onto a BA (Hons) Public Services degree.



Module guide

Year one core modules

- Understanding Public Service
- Basic Criminalities
- Working in Public Services
- Work-based Learning 1
- Researching Social Issues
- Political Ideologies and Social Controversies

Year two core modules

- Work-based Learning 2
- Leading Public Services
- Cultures of War and Peace
- Social Research Methods
- Equality and Cultural Diversity at Work
- Resilience and Emergency Management

Assessment

Assessment is via a mix of examination, coursework and essays, plus other oral, work-based and activity-based assignments.

Associated careers

This degree has been developed, and continues to develop, through the very strong links with the Fire, Police, Prison, and Ambulance Services, Revenue & Customs, and the Armed Forces. As a graduate in public service you will be ideally situated to pursue a career in all of these areas.

Entry Requirements

Full Level 3 qualification(s) required in a related subject; e.g. A level, BTEC or Access to HE. GCSEs or Level 2 equivalent also required; GCSEs at grade C or above in English, Mathematics and Science. Please note AS levels are acceptable only when combined with other qualifications. Students who do not qualify by any of these routes are invited to contact us to discuss admission based on previous qualifications and experience.

FACT: We have professional links with external agencies such as Axiom Housing, Cambridgeshire Constabulary, Cambridgeshire Fire and Rescue Service, HMP Peterborough, Cambridgeshire Police and Crime Commissioners Office and the Fire Brigade Union.

PUBLIC SERVICE (TOP UP) BA (HONS)

KEY FACTS

Faculty	Arts, Law and Social Sciences
Location	University Centre Peterborough
Duration	1 Year Full-time
UCAS Code	N147

Course Overview

A one year, full-time course designed specifically for those looking to get more from their FdA Public Service degree; the opportunity to top-up to the BA (Hons) degree. This course provides a bespoke pathway to advancing your Public Service knowledge and academic skills in line with the requirement of your future employers.

Throughout the course you will have input from outstanding subject specialist teaching staff and involvement from public service personnel (including: Police, Fire Brigade, Military, Probation Services and Local Government). Therefore, improving and encouraging a thorough understanding of the sector and those sectors operating alongside them. Completion of this course will open up career opportunities within a wide range of public services and other related industries.

Module guide

- Major Undergraduate Project
- Public Service Policies
- Politics and Public Service
- Invisible Crimes
- Race, Racism and Cultural Identity
- Sexuality and Social Control
- Youth Justice Controversies
- Some other additional modules may be available in future.

Assessment

A wide range of assessment methods are employed as part of this course. These include reports, essays, poster presentations, reflective assessments, case studies and a major academic project.

Entry Requirements

- A Foundation Degree in Public Services, or an equivalent qualification.
- If English is not your first language you will be expected to demonstrate a certificated level of proficiency (IELTS 6.0 or higher) or an equivalent English Language qualification.



- You may also be accepted with an IELTS 5.5 or equivalent, but will be required to undertake an English qualification.

Notes

- This course is direct entry to Year 3; if you are interested in gaining access to the entry course for the Public Service pathway please take a look at the FdA Public Service.

STUDENT PROFILE

Ryan Ellington - Public Services Bsc Hons

Public Services at UCP differs from most degrees due to the fact that it's such a practical course – we do work placements, tabletop exercises and leadership training. This degree gives you much more than just a certificate, it prepares you for a future in a real workplace. The lecturers all have a great knowledge and the majority are ex-public services which means that they have a really good understanding of the course and how to make the most of it. The course is even better now we can do all 3 years here in Peterborough.

SOCIOLOGY BA (HONS)

KEY FACTS

Faculty	Arts, Law & Social Sciences
Location	University Centre Peterborough
Duration	3 Years
UCAS Code	L300
	Part-time study available

Course Overview

Sociology explores the social worlds in which humans live. It examines how these worlds have come about, their striking features and their possible futures.

Sociology encourages us to look beneath the surface of what we take most for granted about life and gives us new ways of making sense of human existence.

Study sociology and you will learn new and exciting information about the way in which humans live. But more than this, you will gain understanding and insight into why people live, work and interact in the ways they do.

This degree is designed to provide you with a firm grounding in the fundamentals of sociology. It offers a stimulating and challenging exposure to a diversity of specialist areas, which reflect changing emphases and developments within sociology. You will gain solid foundations in core elements of sociology, philosophy and politics, but you will also develop your knowledge of specialist interests such as crime and deviance, gender relations, race and racism and social theory.



Sociology encourages you to become an independent and creative thinker, with important critical and analytical skills to challenge 'common sense' assumptions. You can also enhance practical skills relevant to the various vocational paths that lead out from this subject.

In the recent Research Assessment Exercise, many of our Social Science academics were highly rated for their research work on a number of projects as well as participating in the Justice and Communities Research Unit and the Cultures of Digital Economies Research Centre.

Module guide

Year one core modules

- Political Ideological and Social Controversies
- Globalisation and the City
- The Sociological Imagination
- Media and Crime
- Inequality and Class
- Comparing Social Lives
- Making Sense of Gender

Year two core modules

- Knowledge and Belief
- Social Divisions and Inequalities
- Contemporary Work and Organisational Life
- Sociology of Education
- Social Research Methods
- Social Theory

Year three core modules

- Feminist Theory and Practice
- Race, Racism and Cultural Identity
- Gender Relations
- Nature and Society
- Undergraduate Major Project

Assessment

Assessment is via a mix of examinations, essays, class tests, individual and group presentations, portfolios and an undergraduate dissertation.

Special Features

Special Features include:

- Gain extensive skills in social science research
- A mentoring scheme and tailored tutorials that support your studies
- Opportunity to conduct real life social experiments

FACT: The Higher Education Statistics Agency states that Social Science graduates have 'the best job prospects'.



STUDENT PROFILE

Antonio Brown - Sociology BA Hons

I am a mature student at UCP and am currently studying Sociology BA Honours. One of the reasons I chose UCP is the high quality support and teaching on offer. As a student with dyslexia it was important to receive the right learning support which has helped me achieve my grade potential. The facilities and classrooms have been designed around accessibility and with the smaller class sizes this has helped ensure my disability doesn't make me feel restricted. The tutors are all very knowledgeable about the module that we are taught and are always available to lend a helping hand. I have also found the smaller class sizes have meant we are able to work in a more personal environment.

Associated careers

The intellectual disciplines delivered in this course are valued by employers in a wide range of sectors. The media and the Civil Service have traditionally been two of the major employers of sociology graduates, but the range of fields graduates are now entering includes financial services, human resource management, education and general business management.

Entry Requirements

Full Level 3 qualification(s) required in a related subject; e.g. A level, BTEC or Access to HE. GCSEs or Level 2 equivalent also required; GCSEs at grade C or above in English, Mathematics and Science. Please note AS levels are acceptable only when combined with other qualifications. Students who do not qualify by any of these routes are invited to contact us to discuss admission based on previous qualifications and experience.

ACCOUNTING AND FINANCE BSc (HONS)

KEY FACTS

Faculty	Lord Ashcroft International Business School
Location	University Centre Peterborough
Duration	3 Years
UCAS Code	NN43
	Part-time study available

Course Overview

The main aims of this degree are to provide you with a high level of technical ability and knowledge specific to finance and accounting, and to equip you with a range of skills necessary to succeed in today's business environment.

Core to this degree is the development of your understanding of the technical language and practices of accounting and finance. Additionally, other key areas of focus are information technology and its application in business, communication skills and analytical skills. Course options will allow you to focus on specific areas, giving you the opportunity to explore areas of particular interest, or to prepare for defined professional requirements. When you graduate you will be able to:

- Explore and evaluate contemporary accounting theory.
- Analyse empirical evidence concerning financial management, risk, and the operation of global capital markets.
- Demonstrate a sound understanding of the broader business environment.

On a more practical level, you will be able to:

- Demonstrate significant skills in preparing financial statements, performing analysis and delivering financial projections.
- Use appropriate IT business applications to support your financial analysis techniques and enhance reporting.
- Plan and execute research projects.
- Effectively communicate results at whatever level is appropriate to the audience.

Module guide

Year one core modules

- Higher Education and Business Essentials
- Economics for Managers
- Foundations of Finance
- Introduction to Business law
- Business Analytics
- Introduction to Organisations and Management
- Financial and Management Accounting

Year two core modules

- Financial Reporting
- Performance Management
- Project Management
- Financial Management
- Auditing
- Enterprise and Entrepreneurial Management
- Business Research Methods


Year three core modules

- Advanced Financial Reporting
- Monetary Policy
- Undergraduate Management Project
- Corporate Finance
- The Professional Accountant
- Taxation in the United Kingdom

Assessment

Assessment is via a mix of examination, coursework and essays, plus other oral and activity-based assignments. Coursework includes problem-solving activities, consultancy projects, presentations and individual and group reports.





FACT: The BSc degree gives students nine exemptions from the professional ACCA accounting qualification and it is an excellent degree to develop your accounting career.



Associated careers

Our course provides an excellent basis for students who are looking to pursue a career in accounting and finance. It can also deliver an excellent foundation for any number of roles within the wider commercial environment. The technical skills delivered in this degree are much sought after by industry and commerce, and the transferable skills are a valuable asset in almost any business environment.

Links with industry and professional recognition

Our graduates will be awarded a significant level of exemptions from some of the professional accounting bodies. The degree has been accredited by the ACCA (the Association of Chartered Certified Accountants) and successful graduates can expect substantial exemptions from the professional examinations. Further details of exemptions currently available may be obtained from the ACCA website.

Entry Requirements

Full Level 3 qualification(s) required in related subject(s) e.g. A level, BTEC, AAT or Access to HE. GCSEs or Level 2 equivalent also required; GCSEs at grade C or above in English, Mathematics and Science. Please note AS levels are acceptable only when combined with other qualifications. Students who do not qualify by any of these routes are invited to contact us to discuss admission based on previous qualifications and experience.

STUDENT PROFILE

Emma Jackson - Accounting and Finance BSc (Hons)

Prior to studying at UCP I studied AAT level 2 and 3 at PRC which gave me a good background for the Accounting & Finance Degree. UCP is a small university which means you get more one to one support and guidance from the lecturers. Because of the way in which the Degree is delivered I have been able to get part time work experience in a local Accountancy firm Saffery Champness which has enabled me to enhance my employability.

BUSINESS MANAGEMENT

BSc (HONS)

KEY FACTS

Faculty	Lord Ashcroft International Business School
Location	University Centre Peterborough
Duration	3 Years
UCAS Code	N290
	Part-time study and January starts available

Course Overview

As with many of our business degrees, the aim of this course is to equip you with a solid foundation in business and management theory so that you can operate effectively within the global economy. You will also have the opportunity to develop a range of practical skills and analytical techniques currently used within a number of business areas.

The wide range of course modules allows you to focus on areas of particular interest or to prepare for specific professional requirements. Close ties with international industry and business ensure that course content is aligned with contemporary business practice.

When you graduate you will be able to display a real understanding of contemporary issues such as globalisation, sustainability and social and demographic change; demonstrate a sound appreciation of management practice, including human resources, marketing, accounting and finance and information management; and critically analyse strategic commercial behaviour.



On a more practical level, you will be able to use appropriate IT business applications to support analysis and enhance reporting, utilise appropriate qualitative and quantitative techniques to analyse a range of issues, plan and execute research projects and effectively communicate results at whatever level is appropriate to the audience.

Our course will prepare you for the world of business today. But more importantly, it will develop you intellectually so that you can continue to learn and grow after you graduate, enabling you to succeed within the fast-changing commercial environment.

Module guide

Year one core modules

- Academic Skills
- Economics for Managers
- Global Business Environment
- Introduction to Accounting and Finance
- Introduction to Organisations and Management
- Principles of Marketing
- Statistics for Business and Management

Year two core modules

- Business Research Methods
- Enterprise and Entrepreneurial Management
- Managing Human Resources and Improving Organisational Performance
- Project Management
- Responsible Business
- Strategic Management

Year three core modules

- Advanced Strategic Management
- Business and Employment Law
- Career Management and Employability
- Practising Sustainable Business
- Undergraduate Major Project

Assessment

Assessment is via a mix of examination, coursework, essays and other written assignments. Coursework includes problem-solving activities, consultancy projects, presentations, business simulations and individual and group reports.

FACT: EMSI data identifies an 11.3% increase in management consultant and intermediate/senior roles between 2007 and 2013. This is 26.8% in the Eastern Region. Study with us and we'll give you the skills to succeed.



Associated careers

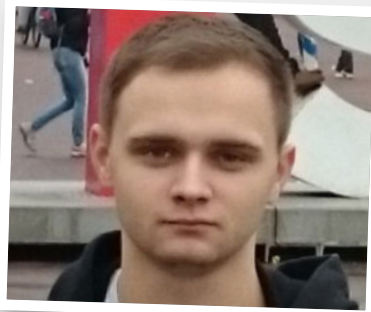
The course provides an excellent foundation for a career in financial services, marketing, consultancy or general business management.

Links with industry and professional recognition

Depending on course options taken, graduates may be exempt from certain examinations for some professional bodies. The course brings you into close contact with practitioners and specialists from a wide range of business functions and management within the global economy.

Entry Requirements

Full Level 3 qualification(s) required e.g. A level, BTEC or Access to HE. GCSEs or Level 2 equivalent also required; GCSEs at grade C or above in English, Mathematics and Science. Please note AS levels are acceptable only when combined with other qualifications. Students who do not qualify by any of these routes are invited to contact us to discuss admission based on previous qualifications and experience. .



STUDENT PROFILE

Serafin Kapusta - Business Management BSc (Hons)

I have enjoyed the opportunity to experience different topics within the Business Management Degree including; Accounting, Strategy to Marketing and Employability Skills. The ability to have a close relationship with the UCP lecturers truly supports your learning.

I also believe that key skills such as time management, teamwork and confidence which I have gained at UCP will fundamentally assist me with my career path. I am currently applying for graduate schemes, hoping to take on new challenges and gain new experience in a leadership and management position within a Hospitality Industry.

POSTGRADUATE DIPLOMA IN HUMAN RESOURCES MANAGEMENT CIPD

KEY FACTS

Faculty	Business School
Location	University Centre Peterborough
Duration	2 years part-time
UCAS Code	N/A

Course Overview

This new two-year part-time postgraduate programme in Human Resource Management has been designed to meet the requirements of CIPD's advanced level qualifications.

This programme is ideal for those aspiring to become effective HR practitioners - whether working as managers or consultants in generalist or specialist roles. It will allow you to develop your understanding of organisations and the changing external context in which HR operates. Using critical analysis, self-reflection and problem solving techniques, you will learn how to develop and implement creative and strategic HR solutions that drive organisational performance.

The CIPD qualification is the foremost award in the field of human resource management and is held by many UK and international HR directors. This qualification will provide you with the underpinning knowledge towards CIPD's professional membership (Associate, Chartered Member or Chartered Fellow).

Modules (Subject to change)

Year one core modules

- Human Resource Management in Context
- Resourcing and Talent Management
- Leading, Managing and Developing People
- Developing Skills for Business Leadership

Year two core modules

- Designing, Delivering and Evaluating Learning & Development Provision
- Employment Law and Relations
- Investigating a Business Issue from a Human Resources Perspective

Assessment

Assessment is by modular assignments incorporating written reports and essays, oral presentations, case study analysis, examinations and a portfolio.

Links with industry and professional recognition

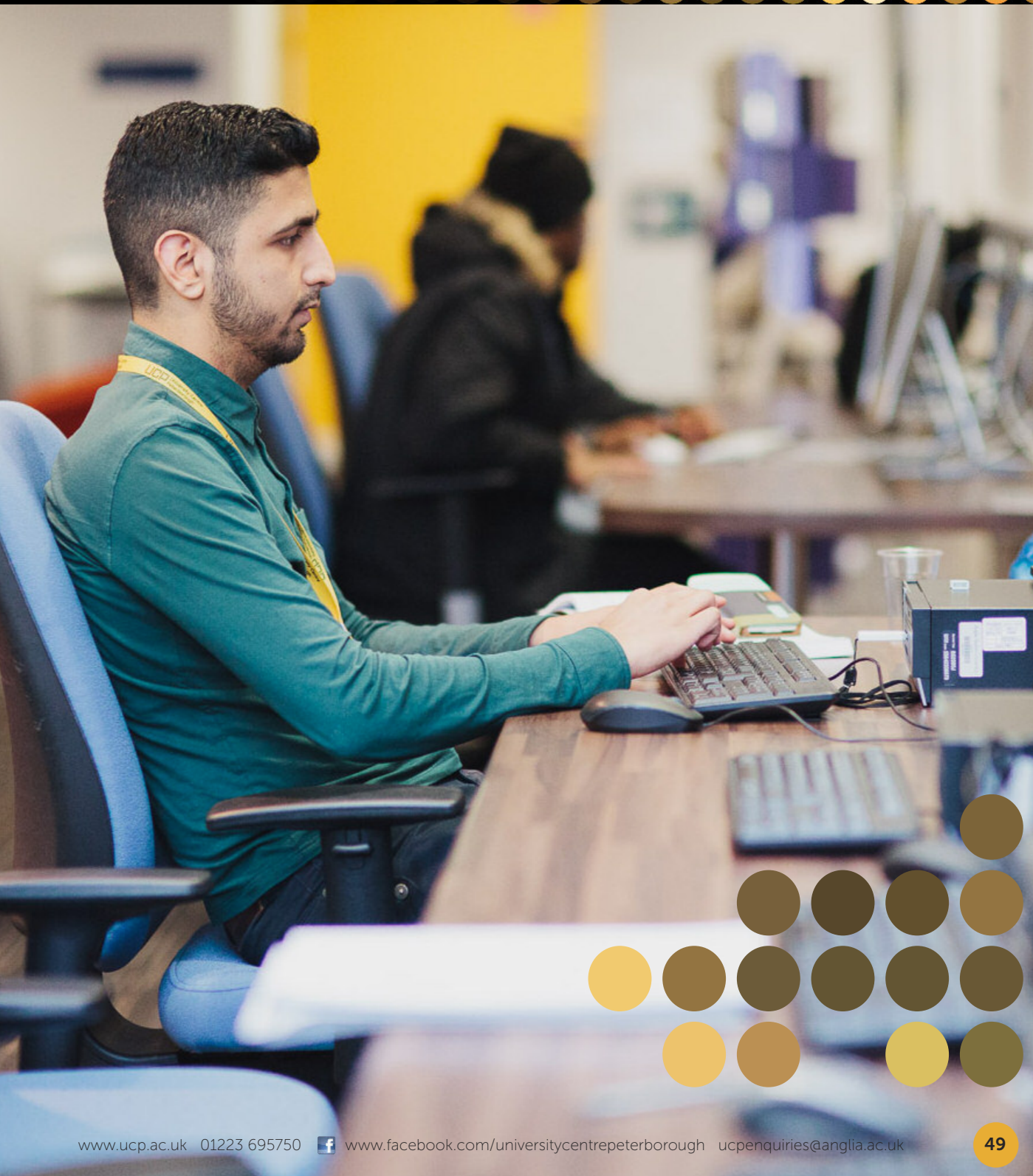
The CIPD is the primary professional body in the UK for those involved in the management and development of people. They have designed their new advanced level curriculum, which is incorporated in our Postgraduate Diploma in Human Resource Management, following extensive research so that you can be sure that you will be equipped with the knowledge and skills that employers are seeking. Our programmes, accredited by the CIPD, are designed to be academically rigorous whilst maintaining a focus on the skills and knowledge you need for a successful career in HRM. Successful completion of our programme enables direct entry to the MA Human Resource Management.

Entry Requirements

A degree from a UK University, normally at a minimum of lower second class honours; or an S/NVQ Level 4; or a foundation or intermediate HR award accredited by CIPD and relevant experience in a managerial role or role with professional responsibility if, in the opinion of the admissions tutor, they are capable of profiting from and contributing at the appropriate level to the pathway. Holders of other awards, including those from non-UK universities will be considered on the equivalence of their qualifications. Those applicants for whom English is not the first language will be expected to demonstrate a certified level of proficiency of at least IELTS 6.5 or equivalent. Non-Academic Conditions: Interviews.



FACT: Completion of the qualification frequently results in career enhancement and promotion.



EARLY YEARS, CHILDCARE AND EDUCATION FdA

KEY FACTS

Faculty	Education
Location	University Centre Peterborough
Duration	2 years full time
UCAS Code	LXM3

Course Overview

The main aims of this Foundation Degree are:

- To develop generic and transferable skills relevant to the widening Children's and Young Peoples workforce sector to improve their employability and progression in this area.
- To provide students with underpinning knowledge of the common core requirements within the Children's and Young Peoples work sector.
- To develop awareness of regulatory frameworks and appropriate approaches for Early Years, Childcare and Education contexts.
- To cultivate the development of autonomous thinking and learning.
- To provide Early Years, Childcare and Education practitioners with a course to a Higher Education qualification that enables successful students to progress on to an Anglia Ruskin University Honours Degree Course.
- To provide an opportunity to access programmes of continued professional development for those who wish to progress on to further study and sector related qualifications and Awards
- To achieve the specified learning outcomes contained within the modules of the course.



- To provide enhanced lifelong learning opportunities for personal and professional progression.

Core to this foundation degree is the development of your understanding of the theoretical and practical elements of working with primary aged children. It is particularly suitable for anyone with current experience in an early years setting or a primary school as many of the lectures and assignments build on the experience you already have within this environment. On top of attendance at lectures you will need to be in a support role (paid or voluntary) within an early years setting or a primary aged setting. Lectures are scheduled one day per week to offer maximum flexibility for this support role.

Modules (Subject to change)

Year one core modules

- Learning and Development
- Researching Childhood
- Play, Health and Well Being
- Work-based Learning 1

Year two core modules

- Safeguarding the Young
- Supporting Children's Learning
- Embracing Diversity
- Work-based Learning 2 - Professional Practice.

Assessment

Assessment is via a mix of coursework and essays, plus other oral and activity-based assignments. All constituent modules for this course are assessed by at least one assignment, which is fine graded.

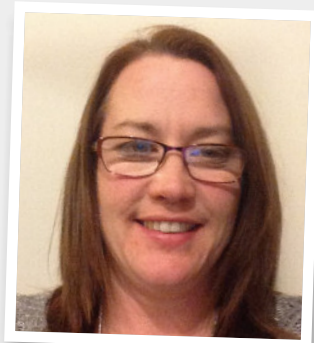
Associated careers

Our course provides an excellent opportunity to extend practice within your setting. With further study on the BA (Hons) Education Top-up at UCP, it may also offer an opportunity to pursue a career in teaching. It can also deliver an excellent foundation for any number of roles within the wider educational environment.

Entry Requirements

A minimum age of 18. GCSE(s) required: GCSE at grade C or above in English (or any other Level 2 English qualification), appropriate Level 3 Integrated

FACT: This is a sector recognised qualification that will allow you to progress within your career framework and develop strategies to motivate and engage your learners making your role more fulfilling.



STUDENT PROFILE

Beverley Cawston-Tunley, Early Years, Childcare and Education FdA

I am approaching the completion of my Foundation degree in Early Years, Childcare and Education at University Centre Peterborough. As a mature student, returning to study, I have more than surpassed the personal goals that I had initially set myself. My aim was to update and refresh my knowledge and skills to develop my career and I never imagined that I would gain high grades overall.

I am also looking to further my experience within education by moving on to the BA (Hons) Education Top-up offered at UCP. I feel a BA in Education rather than in Early Years will assist me in gaining the knowledge and transferable skills needed to support many career opportunities.

All of the tutors at UCP have made a large contribution to my learning, support and guidance. This has helped to develop my skills; allowing me to reflect upon my own work and continually improve. This strong relationship is one of the main reasons behind choosing to continue my studies and hopefully completing the top up year at UCP.

Qualifications Framework (IQF) Qualification (CWDC) with current or recent experience in childcare. Qualifications consistent with the University's normal matriculation requirements (i.e. if you are under 22, you will need to have two 'A' levels or equivalent other qualifications).

Access to a suitable working environment involving children and young people. Commitment to study and work in the sector. A minimum of 400 hours working in a suitable children's workforce environment (this is flexible and the breadth of students' expertise/experience will be considered). Commitment to the work experience component. ICT competence sufficient to make effective use of word-processing and E-mail facilities. Access to ICT facilities at home and/or in the work place. Qualifications can also be evaluated for Accreditation of Prior Learning (APL). Current DBS required. All applicants are subject to interview.

EDUCATION BA (HONS) TOP UP

KEY FACTS

Faculty	Education
Location	University Centre Peterborough
Duration	1 year Full-time, 2 years Part-time
UCAS Code	X300

Course Overview

The BA (Hons) Education top up will develop your professional knowledge, skills and understanding and, as it's part-time, you can continue to work while you study locally. We will cover a range of topical issues relating to learning, teaching and assessment in schools and other educational institutions. As well as contributing to your personal and academic development, taking our top-up course is a great way to further your career.

Following completion of the BA (Hons) Education, you will be able to enter a wide range of degree-level careers. You may wish to undertake further studies and training - perhaps gaining qualified teacher status. Modules will include a range of research units based on education as well as a major project. You will be assessed in a number of ways, including case studies, action research, reflection and a Major Project.

This course is open to education professionals working in schools, colleges and other educational settings. You should already have 240 credits (120 at Level 1 and 120 at Level 2) before joining this course. The BA (Hons) Education will develop your professional knowledge, skills and understanding -



and, as it's part-time, you can continue to work while you study.

The top up will cover a range of topical issues relating to learning, teaching and assessment in schools and other educational institutions. As well as contributing to your personal and academic development, taking the top-up course is a great way to further your career.

Associated Careers Section

With a BA (Hons) Education under your belt, you'll be ready to enter a wide range of degree-level careers. Or you might choose to undertake further studies and training - perhaps gaining qualified teacher status. As well as primary/secondary teaching, our students will be able to progress into mentoring roles, university administration and jobs as college lecturers and trainers.

Modules studied

Investigation Education Through Research - this module gives you the opportunity to consider the aims and purpose of educational research and will support you to carry out small scale projects in the workplace.

Work Based Learning - An Extended Experience has a focus of experiential learning in the workplace. This will take place in your place of employment or a placement setting within an educational context. You will select the specific focus in consultation with the module tutor, carry out the project and evaluate your development following completion of the project. Raising Achievement through Teaching and Learning will allow you to reflect on why learners succeed or fail and what can be done to enable all learners to thrive.

Undergraduate Major Project will help you to develop either your practice or knowledge within a relevant educational setting.

FACT: An integral part of the course is developing your employability skills; this is achieved by work placements in the second year and reflecting and refining your skills throughout your study time with us.



Assessment

We'll assess you in a number of ways, including case studies, action research, reflection and a Major Project.

Entry requirements

This course is open to education professionals working in schools, colleges and other educational settings. You should already have 240 credits (120 at Level 4 and 120 at Level 5) before joining this course. Accredited Prior Certificated Learning (APCL) and Accredited Prior Experiential Learning (APEL) also exist at point of entry. All applicants are subject to interview.

Important additional notes

Our published entry requirements are a guide only and our decision will be based on your overall suitability for the course as well as whether you meet the minimum entry requirements.

STUDENT PROFILE

Victoria Wilson, Education BA Top Up

The Foundation degree in Early Years has given me the confidence within my practice to implement changes to help further develop the children's and employees needs. It has also been a stepping stone to the BA (Hons) Education Top up, which I am currently enrolled in. The course is challenging me academically and I can see the benefits already within my work and practice.

During my time so far at UCP the lecturers have been very supportive and helpful. I personally struggle with my spelling and grammar, and during the first year of my Foundation degree I was diagnosed with dyslexia. However my lecturers and staff at UCP were extremely helpful throughout the progress and assisted me to gain access to the support I needed.

I currently work within a preschool setting however I hope to progress to delivering Early years training and consultation either in a role with the local council or teaching within the college. I am yet to fully decide however the courses I have taken at UCP will allow me to proceed and have already opened many doors and potential career pathways.

BIOSCIENCE FdSc AND BSc (HONS)

KEY FACTS

Faculty	Science & Technology
Location	University Centre Peterborough
Duration	4 Years part time, 2 years full time
	BSc (Hons) 3 years full time, 6 years part time
UCAS Code	FdSc – 72C8 BSc (Hons) C467

Course Overview

The main aims of this degree are to provide you with a high level of knowledge and understanding of the core biological processes and principles as applied to bioscience. This course will also equip you with the skills that enable you to acquire, interpret and analyse relevant scientific information with a critical understanding of the appropriate contexts for their use.

Core to this degree is the development of your understanding of the industry applications of bioscience and the development of work based practical skills and knowledge to underpin your academic studies. With this philosophy in mind the FdSc and BSc (Hons) in Biosciences have been designed to deliver an academic qualification that will fully prepare you for employment in today's diverse bioscience industry.

When you graduate you, will be able to:

- Demonstrate core knowledge and understanding of the scientific disciplines of bioscience and sufficient knowledge in related fields.
- Apply skills of analysis, synthesis, evaluation and application in the context of bioscience.
- Appreciate the interdisciplinary and multidisciplinary nature of bioscience.

On a more practical level, you will be able to:

- Design, plan, conduct, record and report on investigations, which may involve primary or secondary data, and will comply with safe practices.
- Obtain, record, collate, evaluate and analyse data using appropriate techniques in the field and/or laboratory, working individually or in a group.
- Understand sample selection; recording and analysing data.

Module guide

Year one core modules

- Bio-measurement
- Core Biology
- Foundations of Cell Biology
- Human Anatomy and Physiology I
- Human Anatomy and Physiology II
- Introduction to Biochemistry
- Understanding the Work Sector
- Microbiology

Year two core modules

- Diagnostic Techniques in Pathology
- Metabolism and its Control
- Laboratory Techniques for the Biomedical Sciences
- Principles of Genetics
- Principles of Pathology
- Preparation for Research
- Work based learning

Year three core modules

- Current Advances in Biomedical Sciences
- Medical Genetics
- Molecular Cell Biology
- Special Topics in Bioscience
- Special Topics in Cell and Molecular Biology
- Undergraduate Project



FACT: This programme has been designed to meet the current and future needs of the industry within the Eastern Region and the UK, a leader in Bioscience technologies.



Assessment

You will be assessed via a variety of methods designed to embed transferable employability skills into the course. These methods will include:

- Written examinations
- Essays and portfolios of work
- Work produced from and as a consequence of practical classes
- Student presentations (oral)
- Poster presentations

Associated careers

This FdSc or BSc (Hons) will lead naturally to careers in the health services or in laboratory science, including pathology, toxicology and forensics, as well as more environmental careers such as pollution monitoring and control. If a top-up year is taken and you continue on to complete the full degree, a range of specialisms is possible including biomedicine, disease control, zoology and science teaching.

Entry Requirements

Full Level 3 qualification(s) required e.g. A level, BTEC or Access to HE. Level 3 needs to be in related subject(s) i.e. biology and preferably chemistry in addition. GCSEs or Level 2 equivalent also required; GCSEs at grade C or above in English, Mathematics and Science. Please note AS levels are acceptable only when combined with other qualifications. Students who do not qualify by any of these routes are invited to contact us to discuss admission based on previous qualifications and experience.

Students who complete the foundation course will have the opportunity to progress to the BSc (Hons) Bioscience degree.



STUDENT PROFILE

Amy Simpson, 2nd Year BSc (Hons) Bioscience

I have really enjoyed my time at UCP so far. As part of the Work Based Learning II module in Year 2, I completed a very enjoyable placement at a food and pharmaceutical testing laboratory. This provided me with a real insight into day-to-day working life in a busy lab. I had to organise my own time, workspace and equipment as well as cooperate with other members of the team while learning new techniques that I wouldn't otherwise have done. It has also enabled me to make great industry contacts, which will be hugely beneficial to me in the future when applying for jobs.

COMPUTER SCIENCE FdSc

KEY FACTS

Faculty	Computer Science FdSc
Location	University Centre Peterborough
Duration	2 Years (Each year organised as 3 trimesters)
UCAS Code	G020
	Part-time study available (3 years)

Course Overview

The course is suitable both for employees who wish to develop their careers and for school leavers who want a fast track to working in the IT industry.

Computing is changing our world: the way we work, the way we live. To study computing is to put you at the forefront not just of technological change, but of social change too. FdSc Computing and Information Systems studies the principles and technologies underpinning the systems that are driving this change.

It provides an opportunity to learn about these directly through a combination of work-based learning and in the classroom. The field of computing offers a wealth of opportunity across a range of specialist fields. The variety of course options on offer means that you can fine-tune your degree to focus on particular areas of interest or to meet the requirements of a favoured career.

By taking this course you will be able to:

- Exhibit an understanding of the knowledge and concepts of Computer Science, incorporating the theory, principles and operation of the underlying technologies and methodologies.
- Apply the methods and principles of Computer Science in the analysis, design, and implementation of solutions in a select range of application domains in information systems, software and communications.
- Implement and administer organisation wide information technology and communication systems.
- Work effectively as a team member and to develop as a professional within the discipline and as a technically able practitioner within an organisation.
- Develop as an independent learner and reflective practitioner
- Recognise the professional, moral and ethical standards of the Computing Profession and to be aware of the responsibility in the use and



development of applications which impinge on the working and personal lives of users and other professionals.

Module guide

Year one core modules

- System Design and Development
- Programming Concepts
- Computer Architecture and Networking
- Maths for Computing

Summer trimester/term

- IT at Work
- Workplace Practice

Year two core modules

- Advanced Database Design
- Developing Interactive Web Solutions
- e-Commerce and e-Crime

Summer trimester/term

- Workplace Project

Year Two optional modules

- OO Program Development
- Design Patterns for Software Engineering
- Developing Web Databases
- The Mobile Web
- Networking Essentials
- Networking and Infrastructure Management
- Management of IT
- Principles of Digital Security

FACT: Working closely with local industry the FdSc in Computing and Information Systems provides the knowledge component of a Level 4 Apprenticeship for IT which is suitable for software, web and telecoms professionals.



Assessment

Assessment is via a mix of work-based projects, assignments, presentations, class and laboratory-based tests. These develop your ability to solve problems, to communicate effectively, and become self-motivated.

Special features

Students completing this award may be eligible to transfer to Year 3 of our BSc (Hons) Computing and Information Systems at University Centre Peterborough.

Associated careers

With the combination of excellent practical and academic preparation our course provides, graduates are well-placed to take advantage of employment opportunities for a wide range of computer related careers and/or further study. Previous students have gone into positions such as Web-Based Marketing and IT Service Desk or advanced their careers thanks to their academic qualification.

Please note that this course is currently seeking validation and may be subject to change.

Links with industry and professional recognition

Students are expected to undertake work experience as part of the course; this is a graded element. The course works closely with local employers to ensure that what is delivered is up to date and relevant to local needs.

Entry Requirements

Full Level 3 qualification(s) required in a related subject; e.g. A level, BTEC or Access to HE. GCSEs or Level 2 equivalent also required; GCSEs at grade C or above in English, Mathematics and Science. Please note AS levels are acceptable only when combined with other qualifications. Students who do not qualify by any of these routes are invited to contact us to discuss admission based on previous qualifications and experience. Students wishing to study the FdSc in Computer Science must have an agreed work placement.

Students who complete the foundation degree will have the opportunity to progress to the BSc (Hons).

COMPUTING AND INFORMATION SYSTEMS BSc (HONS)

KEY FACTS

Faculty	Science & Technology
Location	University Centre Peterborough
Duration	3 Years
UCAS Code	GG45
	Part-time study (4 years) and January start available

Course Overview

What sets this course apart is its flexibility as shown by the large choice of optional modules. This makes it ideal if you're looking for a wide range of computing skills – from software development and web design to networking and infrastructure – especially if you're uncertain which area of computing suits you best. The course has just been re-designed, with industry consultation, to ensure that each module builds on previous ones to develop your skills and understanding as speedily as possible.

The specific aims of this course are to:

- Gain an in-depth knowledge and understanding of the concepts of Computing and Information Systems
- Apply the methods and principles of Computing and Information Systems in the analysis, design, and implementation of solutions in a range of application domains.
- Develop a range of transferable skills needed to cope with a rapidly changing IS environment
- Apply a systematic, creative and flexible approach to problem solving
- Develop knowledge and skills relevant to working as a member of a project team
- Develop awareness of professional and ethical aspects of the IT industry
- Understand, critically appraise and contribute to research in the Information Systems domain

Module guide

Our 3-year course has core modules in each year, but 40% of Year 2 modules and 75% of Year 3 modules are options chosen by the students.

Year one core modules

- System Design and Development
- Programming Concepts
- Introduction to Web Design
- Computer Architecture and Networking
- Computer Graphics
- Maths for Computing

Year Two optional modules

- OO Program Development
- Design Patterns for Software Engineering
- Developing Web Databases
- The Mobile Web
- Networking Essentials
- Networking and Infrastructure Management
- Management of IT
- Principles of Digital Security

Year Three optional modules

- Team-Based Development
- AI Programming
- Mobile Application Development
- Embedded Software Engineering
- Network Scaling
- Connecting The Network
- Big Data and Content Management
- Computer-based Learning Environments
- Undergraduate Major Project (core but your own topic)

Assessment

Assessment is via a mix of assignments, presentations, class and laboratory-based tests, case studies, group project work and the Major Project. These develop your abilities to solve problems (both on your own and as part of a team), to communicate effectively, and to be self-motivated.

Links with industry and professional recognition

The course works closely with local employers such as CompareTheMarket, ADP, Free Thinking Design and Landis+Gyr. This provides opportunities for student placements and ensures module content is current and relevant. Guest speakers offer an insight into current practices and issues in our industry and our networking modules take advantage of the CISCO Academy at the Regional College to deliver content which prepares students for the CCNA exams. Some employers offer our students paid summer placements and projects. Students and staff also take part in the Global Day of Code, Digital People In Peterborough and Agile Peterborough, with regular sessions for meeting professionals and developing skills.

Each year, we bring back recent graduates to advise our students on starting a career. Our employment record is excellent. For example, in 2015 over 50% of

FACT: At our annual Undergraduate Exhibition of the students' final projects, twenty industry professionals attended and the event led directly to two of our students receiving successful job offers. We work closely with industry to improve our content so our students benefit from the most up-to-date technologies.



leavers had graduate level jobs in IT by the September graduation ceremony. The Undergraduate Major Project is your chance to develop expertise in a specific subject of your choice, which you can use at interviews and show to professionals from the city at our annual exhibition of 3rd Year project work.

Associated careers

With the combination of excellent practical and academic preparation that our course provides, graduates are well placed to take advantage of employment opportunities for a wide range of computer-related careers or further study. Typical careers begin with local firms such as CompareTheMarket, ADP, Anglian Water, Activ8IT and PS Financials and graduate schemes such as Travis Perkins. In most years, we also have students that go on to teach computing at levels from primary to university.

Entry Requirements

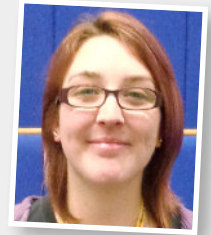
Full Level 3 qualification(s) required in a related subject; e.g. A level, BTEC or Access to HE. GCSEs or Level 2 equivalent also required; GCSEs at grade C or above in English, Mathematics and Science. Please note AS levels are acceptable only when combined with other qualifications. Students who do not qualify by any of these routes are invited to contact us to discuss admission based on previous qualifications and experience.

Please note that this course is seeking validation and may be subject to change.

STUDENT PROFILE

Julie Drewery, Computing & Information Systems BSc (Hons)

I decided to study at UCP as I am local to the area and a friend of mine recommended it. Being a mature student I wanted to study close to my friends and family. I have really enjoyed the Computing & Information Systems Degree which offers diverse modules meaning I have learnt a wide range of skills. I appreciate the personal experience that UCP provides as a smaller university. I always feel that I have access to the help and support that I need throughout my studies. The staff and lecturers are all very friendly, approachable and always remember my name.



As a Student Ambassador I have gained many additional skills during my studies whilst also being paid. I have enjoyed the variety of jobs that you are tasked with as an Ambassador which include but are not limited to: University events, Charity work, Children's University, Promotions, Presentations and representing the student body at various meetings. All of these events have helped to boost my confidence especially when talking to large groups of people.

Along with some of my fellow students, I set up a code club to teach children between the ages of 7 and 11 how to code. This was an extremely rewarding experience as we were able to give back to the community the skills that we learnt on our course. UCP helped to make this possible and have provided the facilities and support that we needed.

UCP actively seek out opportunities for their students within the local community. As a result of this I completed an internship with a local software development company. This allowed me to get a taster of the industry I will be working in as well get the chance to network with other like-minded professionals.

BSc (HONS) CONSTRUCTION MANAGEMENT (TOP-UP)

KEY FACTS

Faculty	Science and Technology
Location	University Centre Peterborough
Duration	2 years part-time 1 year full-time
UCAS Code	5K36

Course Overview

The construction industry is vital to the UK economy and around ten percent of the workforce is employed in this industry. It includes a wide range of opportunities for skilled people. This makes construction management not only a highly relevant course of study but also potentially a very rewarding one.

The course aims to develop your knowledge of building technology principles and your ability to communicate through a range of processes. It will also enable you to demonstrate your understanding of how managers have influenced building processes in a historical economic context. The course will give you a sense of enquiry and reflective self-analysis to serve as a basis for continued professional development. It will enable you to interpret and synthesise information

from a range of sources thus demonstrating a capacity for conceptual, critical and independent thinking, using appropriate methodology and techniques.

Module guide (Subject to change)

Year one core modules

- Introduction to Law
- Project Administration
- Practice-based Learning
- Project Evaluation and Development
- Site engineering surveying

Year two core modules

- Construction Technology and Innovation
- Dissertation/Major Project
- Project Management
- The Construction Business

Assessment

Assessment is via a mix of examination, project work, presentations, role play, case studies, reports and workplace assessment.





Associated careers

The construction industry offers a particularly fast-paced environment, one that is continually changing in response to economic and competitive pressures. Industry professionals need to be able to adapt and evolve to keep pace with changing technologies and methods. The course is fully accredited by the Chartered Institute of Building (CIOB), and will prepare you for the construction environment, ensuring you have the knowledge and skills to succeed within it.

Once you have completed this course, you could go on to a career in the construction industry either in a professional, managerial, or technical capacity in construction management, quantity surveying, building surveying, estate management. You may also apply to join a professional body membership, such as the Chartered Institute of Building (CIOB) or the Chartered Institute of Architectural Technologies (CIAT).

Entry Requirements

You'll need to have completed a recognised Higher National Diploma or FdSc in Construction. All applicants must show that they have a good level of spoken or written English, and if English is not your first language you'll need to demonstrate the ability to study in English.

CRIME AND INVESTIGATIVE STUDIES FdSc

KEY FACTS

Faculty	Science & Technology
Location	University Centre Peterborough
Duration	2 Years
UCAS Code	F411

Course Overview

This unique course is for students looking for a wide variety of forensic knowledge across many fields, enabling them to work in many areas within the criminal justice system. This course provides you not just with the theoretical and practical skills required of a crime-scene examiner, but also familiarises you with criminological and criminal justice theories. You will also gain an understanding of the different investigative techniques used by police and investigative services. Upon completion of the course, you will possess a range of transferable skills and techniques needed in the criminal justice system, which will place you ideally to gain employment in this sector.

You may also be eligible to transfer to Year 3 of our BSc (Hons) Crime and Investigative studies degree should you successfully complete this course.

The aims of this course are:

- To demonstrate an understanding of the UK legal systems and criminal law, and the impact that these have on the investigation of different crimes.



- To develop your understanding of the main theoretical and practical skills of a forensic practitioner.
- To demonstrate an understanding of the main criminological and criminal justice theories in current use.
- To demonstrate an understanding of the different investigative techniques used by police services.
- To undertake creative, rigorous and relevant research using appropriate methodologies.
- To prepare you to present reports in oral, written and other appropriate formats.

Upon completion of this course, you will be able to demonstrate knowledge and understanding of:

- The subject.
- The major aspects of terminology.
- The major types of forensic science evidence.
- The principle techniques of forensic investigation and their application to criminal cases.

Module guide

Year one core modules

- Introduction to Forensic Methodologies
- Introduction to Police and Photography
- Identification Techniques
- Perceptions of Crime
- Physical Criminalistics
- UK Law and Legal Systems

Year two core modules

- Community Safety
- Scene and Laboratory Investigation
- Mass Disasters
- Police and Forensic Investigations
- Project Preparation
- Work-based Learning

FACT: An integral part of the course is developing your employability skills; this is achieved by work placements in the second year and reflecting and refining your skills throughout your study time with us.



Assessment

You will be assessed via a variety of methods designed to embed transferable employability skills into the course. These methods will include:

- Essays and portfolios of work
- Practical & written examinations
- Poster presentations
- Role playing
- Student presentations (oral)
- Work produced from and as a consequence of practical classes

Associated careers

Upon completion of this course you will be able to work in a variety of areas within the criminal justice system. As well as in more obvious roles such as police officers, crime scene investigators and police community support officers, you could work within the intelligence and analytical sector or as a community safety officer, probation officer, prison service or youth and anti-social behaviour worker.

Entry Requirements

Full Level 3 qualification(s) required; e.g. A level, BTEC, or Access to HE. GCSEs or Level 2 equivalent also required; GCSEs at grade C or above in English, Mathematics and Science. Please note AS levels are acceptable only when combined with other qualifications. Students who do not qualify by any of these routes are invited to contact us to discuss admission based on previous qualifications and experience.

CRIME AND INVESTIGATIVE STUDIES BSc (HONS)

KEY FACTS

Faculty	Science & Technology
Location	University Centre Peterborough
Duration	3 Years
UCAS Code	5N28

Course Overview

Many people are interested in studying crime, forensic science, policing and law, but have difficulty in choosing which one to study at university. This course allows you to study all of these subjects by combining the scene examination part of forensic science with other crime-related subject areas, such as policing, criminology and intelligence, as well as the necessary legal aspects that are vital. Graduates from our course will therefore be able to enter a variety of employment areas within the criminal justice system.

The specific aims of this course are:

- To demonstrate an understanding of the UK legal systems and criminal law and the impact that these have on the investigation of different crimes
- To develop your understanding of the main theoretical and practical skills of a forensic practitioner
- To demonstrate an understanding of the main criminological and criminal justice theories in current use
- To demonstrate an understanding of the different investigative techniques used by police services
- To undertake creative, rigorous and relevant research using appropriate methodologies



Module guide

Year one core modules

- Introduction to Forensic Methodologies
- Introduction to Police and Photography
- Identification Techniques
- Perception of Crime
- Physical Criminalistics
- UK Law and Legal Systems

Year two core modules

- Scene and Laboratory Investigation
- Mass Disasters
- Police and Forensic Investigations
- Project Preparation

Year three core modules

- Crime Scene Analysis
- Forensic Anthropology and Pathology
- Major Crime Scene Management
- Undergraduate Major Project
- Specialised Topics in Investigative Science

Assessment

You will be assessed via a variety of methods designed to embed transferable employability skills into the course. These methods will include:

- Written examinations
- Essays and portfolios of work
- Work produced from and as a consequence of practical classes
- Student presentations (oral)
- Poster presentations
- Role playing

FACT: Our students benefit by taking part in visits to local & national agencies such as the Mortuary, the Sexual Offence Referral Centre and Kenyon Europe.



Associated careers

Graduates from our course will be able to gain employment in a variety of areas within the criminal justice system, including community safety officers, intelligence and analytical posts, youth and anti-social behaviour workers, as well as the more obvious roles such as police officers, police community support officers, crime investigators and crime scene examiners.

Entry Requirements

Full Level 3 qualification(s) required; e.g. A level, BTEC, or Access to HE. GCSEs or Level 2 equivalent also required; GCSEs at grade C or above in English, Mathematics and Science. Please note AS levels are acceptable only when combined with other qualifications. Students who do not qualify by any of these routes are invited to contact us to discuss admission based on previous qualifications and experience.

STUDENT PROFILE

Ruth Hovell, Crime & Investigative Studies BSc (Hons)

I am currently in my second year studying Crime & Investigative Studies. This is an exciting module that brings to life the world of forensics combined with law and Police investigation practices. The way in which criminals are caught or victims identified forensically has been brought to life with zeal and integrity by our lecturers.

My passion for forensics has deepened and I have a greater appreciation for every professional that works tirelessly in mass disasters around the world. With thanks to this degree and a wide range of materials covered, my only problem is deciding which career pathway I now want to take when I complete!

INTEGRATED ENGINEERING TOP-UP BEng (HONS)

KEY FACTS

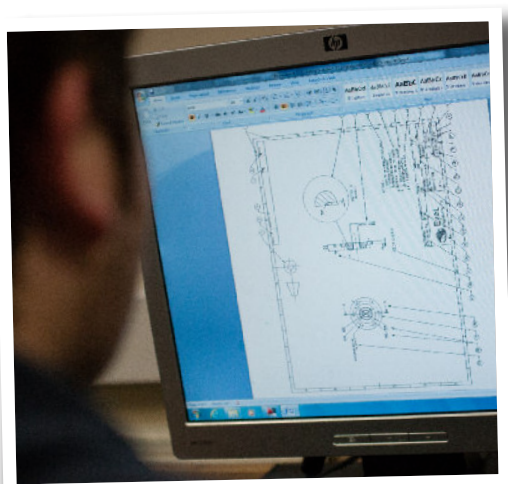
Faculty	Science & Technology
Location	University Centre Peterborough
Duration	1-2 years full time (depending on APL) 2-3 years part-time (depending on APL)
UCAS Code	H110
	Part-time study available

Course Overview

This course allows you to study a variety of electrical and mechanical engineering disciplines both practically and theoretically. You will also have the opportunity to conduct research of your own through the final-year project module. This course will improve both your practical and academic skills to prepare you for a wide range of opportunities either in employment in Research and Development or on to a Masters degree course.

The specific aims of this course are:

- To provide the opportunity for you to progressively acquire a thorough grounding in the concepts and skills of the central topics in engineering.
- To provide the specialist knowledge base and skills for you to specify and design the electronics subsystems relevant to a particular subject area.
- To provide you with the engineering skills and knowledge required in a business context to achieve an economic solution.
- To widen and develop your experiences and your organisational and analytical skills to enable you to enhance your role within your organisation.



- To enable you to consolidate professional and personal expertise in competitive commercial and industrial environments.
- To widen and develop your understanding of essential facts, concepts, principles and theories to your chosen engineering discipline.
- To develop your creative and innovation skills in solving problems, and in designing systems, components and processes.
- To work separately or in a multi-disciplinary team.
- To encourage you to become an effective engineer and undertake lifelong learning particularly for continuing professional development.

Module guide (Based on 3 years part-time study)

Year one core modules

- Advanced Engineering Maths
- Applied Software
- Introduction to Engineering Materials
- Maths for Engineers 2
- Programmable Logic Controllers
- Statistics and Process Quality Assurance

Year two core modules

- Applied Mechanics
- Control Systems
- Embedded Systems
- Signals & Systems
- 3D Computer Aided Design

Year three core modules


- Project Management for Technologists
- Power Systems
- Research Methods and Individual Project
- Stress & Dynamics

Assessment

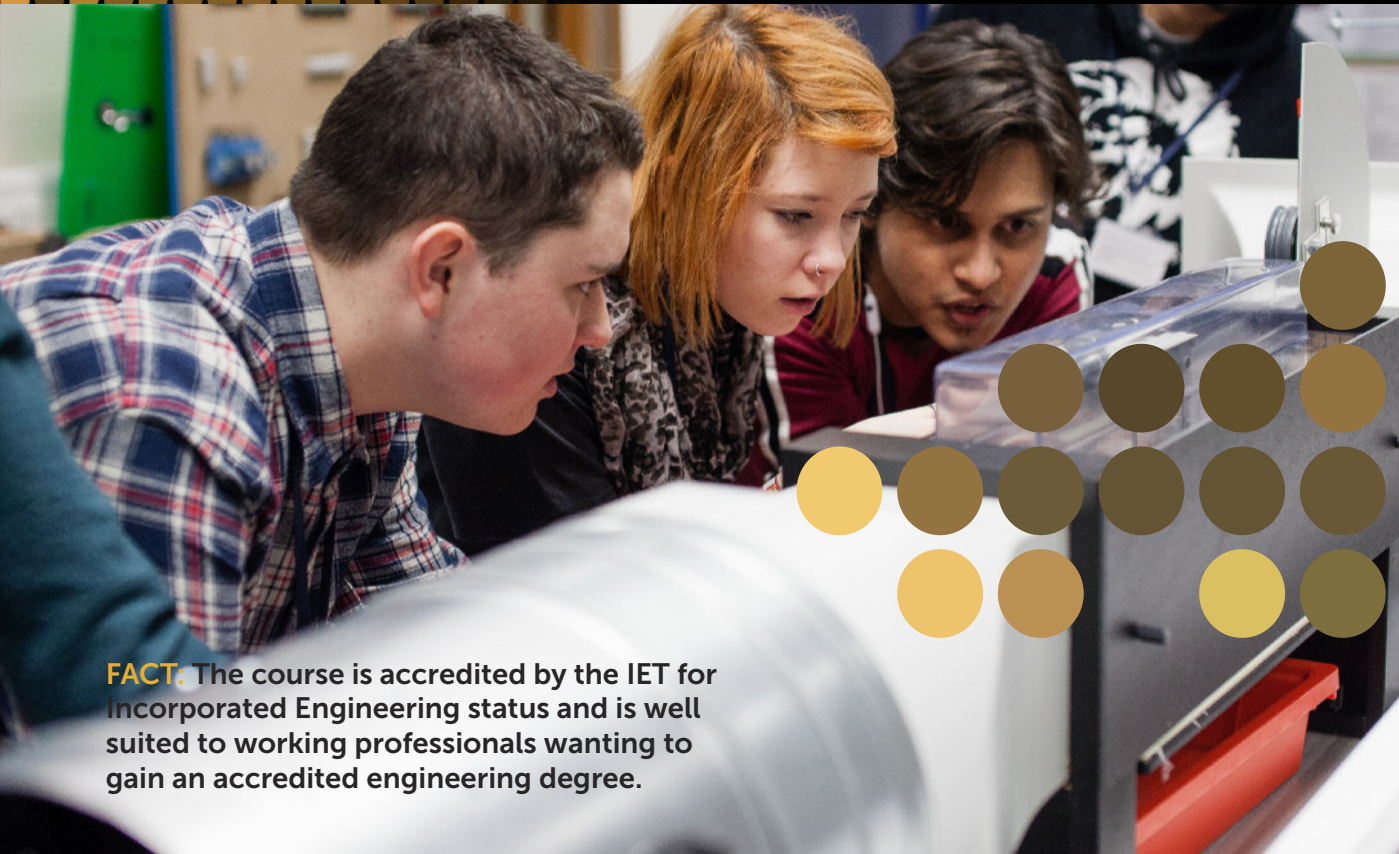
Assessment will be via course work and examinations. Links with industry and professional recognition
This degree has been accredited by the Institution of Engineering and Technology for Incorporated Engineer status.

Associated careers

On successful completion of this degree, you will be able to work within the engineering industry as a technician, design engineer, quality control engineer or test engineer. This programme is accredited as fulfilling the educational requirements for registration



FACT: 98% of our graduates are in full time engineering jobs and we have an average classification of 2:1 and above.



FACT: The course is accredited by the IET for Incorporated Engineering status and is well suited to working professionals wanting to gain an accredited engineering degree.

as an Incorporated Engineer when students transfer from the accredited HNC / HND or Foundation Degrees taken at Peterborough, Huntingdon and Thurrock and Basildon Colleges.

Entry Requirements

Minimum entry requirement is 120 credits from a recognised level 4 engineering related course e. g HNC. Mechanical / Electrical Electronic Engineering plus relative work experience and training. Advanced entry will also be considered from credits transferred from other HEI's and or HND / FdSc in related disciplines plus work experience in subject sector, IELTS 6.5.

We are currently in the process of validating two new degrees, BEng (Hons) Applied Mechanical Engineering and BEng (Hons) Electrical and Electronic Engineering.

STUDENT PROFILE

Kevin King - Integrated Engineering Top-up BEng (Hons)

I have been balancing a full-time career as technical engineer and studying part-time for my degree. The support and education received from UCP has been invaluable and the knowledge I have gained in my studies has benefited my career greatly. Problem solving skills are a vital part of my current role and these have been developed and improved. Even as a part-time student, the student experience I have received has been very welcoming and personal; lecturers understand the difficulties with potentially conflicting schedules as well as the educational and professional parts of my life.

SPORTS COACHING AND PHYSICAL EDUCATION BSc (HONS)

KEY FACTS

Faculty	Science & Technology
Location	University Centre Peterborough
Duration	3 Years
UCAS Code	N870
	Part-time study available

Course Overview

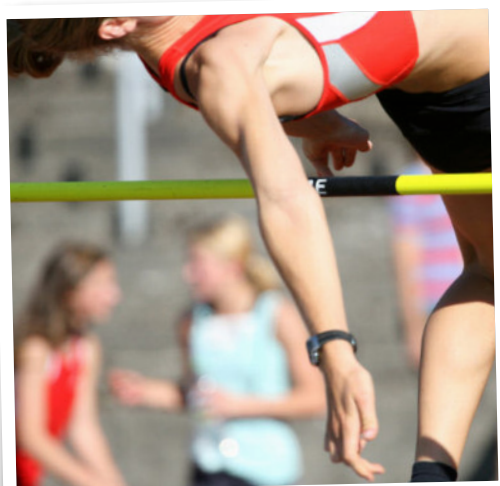
The coach is responsible for instructing, training and directing the athlete or the team. Their aim is to develop the players' skills or to achieve a specific goal. But how does the coach know which methods to use?

In this innovative degree, you will explore the scientific approach to coaching. You will find out which areas of knowledge, such as human movement, pedagogy, child development, physiology and psychology, can contribute to making coaching methods more effective.

This course is designed to explore the scientific basis of coaching to supplement the craft knowledge gained by a coach. These methods are explored within a specialised laboratory environment utilising the latest technology and analytical equipment in a small, friendly and supportive setting.

This degree has two main aims:

- To provide you with a firm understanding of the theory underpinning the physical education and coaching processes and how such theories can be applied.



- To equip you with communication, organisational, practical, analytical and scientific skills necessary for coaching and teaching sport.

The specific aims of this course are:

- To address relevant QAA subject benchmark statements and United Kingdom Coaching Certificates (UKCC) qualification guidelines.
- To provide a framework of modules for the development of the theory, concepts and practical application of Coaching and Physical Education.
- To provide you with the necessary oral, written, practical and technical skills to operate effectively as coaching practitioners.
- To provide you with the required knowledge to operate ethically and safely as coaches.
- To allow you the opportunity to work independently in real-life situations.
- To build up a range of transferable skills and competences relevant to careers in coaching sports development and other graduate employment situations.
- To allow you the opportunity to plan, execute, analyse and report on a research project of your own design.
- To provide you with the opportunity to study for professional qualifications (national governing body coaching).
- To promote access to, and further progression within, higher education, research and professional development.

Module guide

Year one core modules

- Anatomy in Motion
- Coaching and Behaviour
- Exercise Physiology
- Research Methods in Sports and Exercise
- Sport and Exercise Psychology

Year two core modules

- Applied Coaching
- Exercise Testing
- Perceptual Motor Skills
- Performance Analysis
- Psychological Profiling
- Research Methods
- Sports Development

FACT: Our students work with a number of sports clubs throughout their studies including Peterborough United and Leicester Tigers which provides them with the real life experience needed to get a job at the end of their degree. Some of our students also find paid jobs in coaching and personal training during their studies



Year three core modules

- Applied Sport Psychology
- Effective and Ethical Coaching
- Long Term Athlete Development
- Scientific Basis of Training
- Strength and Conditioning
- Undergraduate Major Project

Assessment

We use a mixture of assessment methods such as completing performance analysis work, coaching portfolios, presentations, essays and examinations.

Associated careers

This innovative blend of theory and practice will develop you into a modern scientific coach who is able to coach an array of learners in any age group. It may also lead into other related jobs such as sports development, performance analysis and teaching.

Entry Requirements

Full Level 3 qualification(s) required – with at least one qualification in a Science related subject; e.g. A level, BTEC or Access to HE. GCSEs or Level 2 equivalent also required; GCSEs at grade C or above in English, Mathematics and Science. Please note AS levels are acceptable only when combined with other qualifications. Students who do not qualify by any of these routes are invited to contact us to discuss admission based on previous qualifications and experience.



STUDENT PROFILE

Lauren Broom - Sports Coaching and Physical Education BSc (Hons)

Enrolling on the Sports Coaching and Physical Education degree at UCP has enabled me to develop my skills and knowledge in many areas. In first year, a mixture of anatomy of motion and exercise physiology provided a concrete base to the understanding of how and why the body changes when doing sport. In second year, performance analysis and psychological profiling allowed us to see how we could apply what we had learnt to a working environment. In addition to this, third year provided the opportunity to incorporate all that we had learnt into a final year project.

The sports lecturers have a great passion and an in-depth knowledge of the subject area and will go out of their way to ensure that each student fully understands each module. The small class sizes are also an incredible advantage of UCP; this allows a better communication between students and lectures. Overall my time at UCP has been a great experience, but it is what you make it, there are some great clubs to get involved with and you will meet like minded people who will help you through it all.'

CIVIL ENGINEERING

PEARSON BTEC LEVEL 5 HND DIPLOMA (LEVEL 4 HNC) DIPLOMA IN CONSTRUCTION AND THE BUILT ENVIRONMENT

KEY FACTS

Faculty	Science and Technology
Location	Peterborough Regional College
Duration	HNC 2 years part-time
	HND 2 years full-time
	HND 3 years part-time
UCAS Code	HNC - H201 HND - H202

Course Overview

The continued development and regeneration of towns and cities in the UK is expected to lead to a continuous demand for suitably qualified professionals across all construction disciplines. HNC/Ds are substantially coursework/project based and are designed to equip you with the knowledge, understanding and skills required for the construction sector. The HND qualification is delivered at Peterborough Regional College and is equivalent to two years of undergraduate study and allows progression to a full degree.

This course offers a broad base of traditional construction and the built environment subjects with specialist options allowing you to adapt the course to your particular career ambitions. If you are working within the civil engineering field or have ambitions of working in this area in a professional, managerial, or technical capacity, then this course is for you.



Module guide (Subject to change)

- Design Principles and Application
- Science and Materials
- Health, Safety and Welfare
- Structural Analysis
- Contractual Procedures and Procurement
- Project Management
- Site Surveying Procedures
- Applied Mathematics
- Management Principles and Application
- Group Project
- Economics
- Hydraulics
- Transportation
- Civil Engineering Technology
- Advanced Civil Engineering Technology
- Production Management
- Complex Engineering Problems
- Contract Procedures

Once you have completed this course, you could go on to a career in the Civil Engineering industry either in a professional, managerial, or technical capacity in civil engineering management, structural design, quantity surveying, highways and transportation or civil engineering. You may also wish to continue your studies and go on to a BSc in Civil Engineering. You may also progress to further study towards a professional body membership, such as the Institution of Civil Engineers (ICE) or the Institution of Structural Engineers (IStructe).

Entry Requirements

All applicants must show that they have a good level of spoken or written English, and if English is not your first language you'll need to demonstrate the ability to study in English. Applicants who do not meet the standard entry criteria but have relevant work/life experience will be considered on an individual basis and may be invited to interview.

All applications for this course can be made via UCAS or alternatively visit www.peterborough.ac.uk to download an application form.

CONSTRUCTION MANAGEMENT

PEARSON BTEC LEVEL 5 HND (LEVEL 4 HNC) DIPLOMA IN CONSTRUCTION AND THE BUILT ENVIRONMENT

KEY FACTS

Faculty	Science and Technology
Location	Peterborough Regional College
Duration	HNC 2 years part-time
	HND 2 years full-time
	HND 3 years part-time
UCAS Code	HNC - K221 HND - K222

Course Overview

The continued development and regeneration of towns and cities in the UK is expected to lead to a continuous demand for suitably qualified professionals across all construction disciplines. HNC/Ds are substantially coursework/project based and are designed to equip you with the knowledge, understanding and skills required for the construction sector. The HND qualification is delivered at Peterborough Regional College and is equivalent to two years of undergraduate study. **Completion of this HNC/D allows progression to the full degree, BSc (Hons) Construction Management, which can be studied at University Centre Peterborough.**

This course offers a broad base of traditional construction subjects with specialist options allowing you to adapt the course to your particular career ambitions. If you are working within the construction field or have ambitions of working in this area in a professional, managerial, or technical capacity, then this course is for you.

Module guide (Subject to change)

- Design Principles and Application
- Science and Materials
- Health, Safety and Welfare
- Technology of Complex Buildings
- Contractual Procedures and Procurement
- Project Management
- Building Control Procedures and Legislation
- Site Surveying Procedures
- Applied Mathematics
- Management Principles and Application
- Group Project
- Conversion and Adaption of Buildings
- Economics
- Measuring, Tendering and Estimating for Construction and the Built Environment
- Construction Methods and Design Solutions
- Production Management
- Contract procedures



Once you have completed this course, you could go on to a career in the construction industry either in a professional, managerial, or technical capacity in construction management, quantity surveying, building surveying, estate management. You may also wish to continue your studies and go on to a BSc in Construction/Construction Management. You may also progress to further study towards a professional body membership, such as the Chartered Institute of Building (CIOB) or the Chartered Institute of Architectural Technologies (CIAT).

Entry Requirements

All applicants must show that they have a good level of spoken or written English, and if English is not your first language you'll need to demonstrate the ability to study in English. Applicants who do not meet the standard entry criteria but have relevant work/life experience will be considered on an individual basis and may be invited to interview.

All applications for this course can be made via UCAS or alternatively visit www.peterborough.ac.uk to download an application form.

ELECTRICAL AND ELECTRONIC ENGINEERING

PEARSON BTEC LEVEL 4 HNC

KEY FACTS

Faculty	Science and Technology
Location	Peterborough Regional College
Duration	1 year FT / 2 years PT
UCAS Code	H600

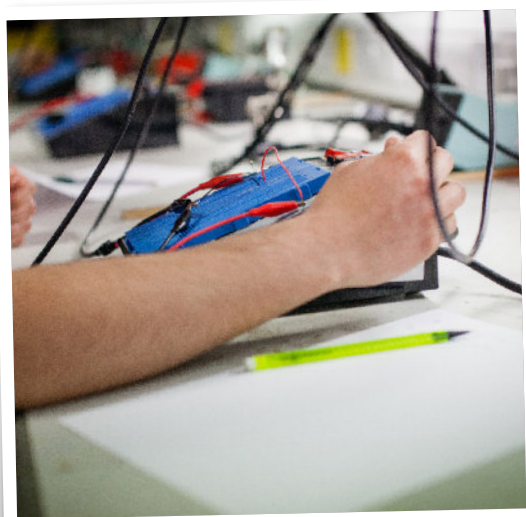
Course Overview

The Edexcel Level 4 HNC in Electrical Electronic Engineering provides a specialist work-related programme of study that covers the key knowledge, understanding and practical skills required in the engineering sector and also offers particular specialist emphasis through the choice of specialist units. Edexcel Level 4 HNCs provide a nationally recognised qualification (120 credits) offering career progression and professional development for those already in employment and opportunities to progress on to an honours degree programme. This qualification is delivered at Peterborough Regional College and can be studied full-time or part-time. Successful completion of this course allows progression on to the BEng (Hons) Integrated Engineering.

Module guide

Year one core modules

- Analytical Methods
- Computer Programming in C
- Microprocessor Systems
- Research Project
- Engineering Science



Year two core modules

- Programmable Logic Controllers
- Combinational & Sequential Logic
- Project Design, Implementation and Evaluation

Entry requirements

MMP Extended Diploma or DM National Diploma/Certificate, recognised Access to Engineering e.g. CAVA. Grade C or above in A level maths and physics. Mature industrial based students who do not meet the entry requirements are invited to complete a 1 year bridge to HE course (with Distinction) at PRC.

All applications for this course can be made via UCAS or alternatively visit www.peterborough.ac.uk to download an application form.

MECHANICAL ENGINEERING

PEARSON BTEC LEVEL 4 HNC

KEY FACTS

Faculty	Science and Technology
Location	Peterborough Regional College
Duration	1 year Full Time or 2 years Part Time
UCAS Code	H300

Course Overview

The Edexcel Level 4 HNC in Mechanical Engineering provides a specialist work-related programme of study that covers the key knowledge, understanding and practical skills required in the engineering sector and also offers particular specialist emphasis through the choice of specialist units. Edexcel Level 4 HNCs provide a nationally recognised qualification (120 credits) offering career progression and professional development for those already in employment and opportunities to progress on to an honours degree programme. The qualification is delivered at Peterborough Regional College and can be studied full-time or part-time. Successful completion of this course allows progression onto the BEng (Hons) Integrated Engineering, which is delivered at University Centre Peterborough

Modules (Subject to change)

Year one core modules

- Analytical Methods
- Materials Engineering
- Advanced 3D CAD
- Research Project
- Engineering Science

Year two core modules

- Engineering Thermodynamics
- Mechanical Principles
- Project Design, Implementation and Evaluation

Entry Requirements

MMP Extended Diploma or DM National Diploma/Certificate, recognised Access to Engineering e.g. CAVA. Grade C or above in A level maths and physics. Mature industrial based students who do not meet the entry requirements are invited to complete a 1 year bridge to HE course (with Distinction) at PRC.



After completing this HNC, Students will have the opportunity to study Engineering to degree level at UCP. Please see BEng (Hons) Integrated Engineering for more details.

All applications for this course can be made via UCAS or alternatively visit www.peterborough.ac.uk to download an application form.

FACT: The HNC has excellent links to local industry and progression routes

Student Life

At UCP you always come first and we have a number of facilities and support areas to make your experience with us an enjoyable one!

The Student Experience Team

University Centre Peterborough works with students and external companies to offer activities outside the curriculum that give you the opportunity to broaden your university experience, enhance your skill set and engage in student life. The reason this is so important is employers greatly value the knowledge and skills that graduates develop whilst studying at university, along with the skills and experience they gain from undertaking activities beyond the curriculum. Student and employer feedback helps us identify what extra-curricular and social events are missing and where student experience can be developed and improved.

We offer a variety of clubs and societies at UCP. These include; Netball, Football, Table-top games, Criminology and English Lit. As well as societies, UCP organises social events such as the annual Christmas ball, charitable events

such as cake bakes and celebratory events such as the Student Experience Awards evening. Such events are organised for you to enjoy and celebrate your time here at UCP. All students are encouraged to participate in organising the social and academic events at the University alongside our Student Experience team. Students can also attend guest lectures, participate in trips and if you are studying archaeology secure funding for digs which may be in the UK or abroad.

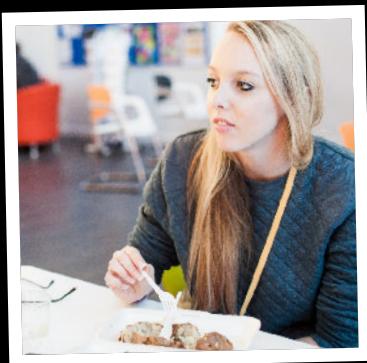
Our student events include:

- Freshers' Week
- Employment Day
- Christmas Ball
- Valentine's Social
- Fundraising Events
- Finance Week
- Awards Evening
- Graduation Social

Student Council Committee

At UCP we feel that every student should be able to have their say. Each academic year there will be the opportunity to nominate someone from your course to be your Student Representative for the year. Training will be provided and it is one of the many opportunities you will have to enhance your CV and provide feedback that will influence changes to develop and improve the academic experience for all students.

The aim of the Student Council Committee is to give all nominated Student Representatives the opportunity to report on any issues and highlight the aspects you enjoy so we can do more. Student Ambassadors and Representatives will also attend key meetings such as the Learning, Teaching and Assessment group and our Course Management Committee as our aim is to develop provision and quality with you, the student, in mind.



Careers Advice and Employability

The Careers Adviser is available to help you plan your next steps and subject lecturers will guide you when applying for employment or postgraduate study. Regular Employability Days ensure you hone your skills in interactive workshops and speak to potential employers. UCP has a dedicated jobs vacancy and volunteering notice board which is regularly updated with the latest employment opportunities.

Chaplaincy Service

The Chaplaincy is available to you irrespective of your faith or commitment, and exists to support your learning experience at UCP. Any spiritual and personal issues can be discussed in confidence. The Chaplaincy holds weekly coffee mornings at UCP where you are welcome to come and have a friendly chat.



"Freshers' Week helped me settle in and made it easier for me to mingle with other students on my course."

Accommodation

Taverners Hall

Opened in September 2011, Taverners Hall has purpose built accommodation for UCP students. Taverners Hall consists of 78 students room, set over 2 sites with a combination of 2 and 5 bedroom flats and 6 bedroom houses.

Both sites are located on Lincoln Road, between a 10-20 minute walk from the UCP Park Crescent campus and both sites have easy access to the local bus route to the City Centre.

Each property has a communal kitchen fully equipped with appliances including cooker, fridge, freezer and microwaves, lounge area with sofas and a breakfast bar, for the larger properties table and chairs are provided along with laundry facilities. One of the 2 bedroom flats at University Court has been designed to suit disabled use. Please see our latest brochure for full property descriptions.



Each of the 78 bedrooms includes en-suite shower room, study area, bed, storage and shelving. Rental costs are inclusive of utility bills and Wi-Fi * please see terms and conditions. University Court also has an onsite common room and laundry room.

The well-lit, secure landscaped grounds, including cycle stores and is accessible by an electronic gates and covered by CCTV with 24 hour emergency call out. Bookings are on a first come, first served basis upon submission of an application form which is available from the Taverners Hall website or from the UCP reception.

For more details visit www.tavernershall.co.uk or email info@tavernershall.co.uk or call 07711 491666.

Belvoir

Alternative accommodation in a range of flats and houses is also available via our dedicated letting agent, Belvoir Lettings.

They will help you find what you want, either close to the University Centre or out in one of the villages on a bus route and with easy access to your study.

Benefits include: tenancies for individual rooms; all inclusive rents; bus service to campus and managed common areas and gardens. Fire Risk Assessments are completed on all properties and all landlords have signed up to a Repair Response System.

For more information please visit www.belvoirlettings.com/peterborough or email peterborough.enquiries@belvoirlettings.com.





Facilities Hire

The University Centre is an award winning £10 million state-of-the-art facility which houses the City's higher education provision. The ultra modern and contemporary 3,000 square metre building has a number of different rooms and facilities which are available for hire at competitive rates. Each is connected to a wireless internet connection and has hearing loop facilities.

Based alongside the towns central park, the University Centre is the perfect city location for all your conferencing needs! We are easily accessible by road or rail and are within walking distance of the City centre.

Rooms are available from as little as £20 per hour and are available to hire Monday – Thursday 9am to 9pm and Friday 9am to 5.30pm during term times (September to May excluding Christmas and Easter) or Monday – Friday 9am to 5.30pm outside of term times (June - September). Discounts are available if you are hiring multiple rooms or looking at long-term rental.

If you wish to hire a room outside of these hours, weekend bookings are available, but an additional staffing cost may occur plus an additional 20% service charge on your chosen room.

Our 92-seater lecture theatre is the ideal venue to address a large audience at a business event/conference. This room is equipped with a full HD projector and state of the art video capture so that you can take away footage of your session.

We also have various sized rooms that can accommodate between 10 and 60 delegates. All rooms come as standard with a HD projector, smart board, Blu-ray player, DVD player, Video player, computer and whiteboard. Additional facilities are available free of charge including flip chart boards, car parking and public access to computers and internet.

For more information about hiring any of our facilities please visit our website, call us on 01223 69 5750 or email ucpenquiries@anglia.ac.uk.

The City of Peterborough

From discovering our fascinating heritage to relaxing with friends at a restaurant or bar, there are countless ways to experience Peterborough's energy and culture. Whether you decide to explore our historic and cosmopolitan city through food, music, heritage or retail, you'll be pleased with what you find.

Heritage, arts and culture

Peterborough is a medieval city with a rich heritage. The splendours of our fine Medieval Cathedral, the Bronze Age settlement of Flag Fen and the Elizabethan grandeur of Burghley House are well known to residents and visitors, but there's plenty of hidden heritage to unearth at our refurbished museum too.

The city hosts a year-round events calendar which draws huge crowds - the annual Arts, Heritage and Willow Music Festivals are just a taste of the fantastic free entertainment on offer in Peterborough.

Situated by the River Nene, the Key Theatre is the perfect choice for a cultural fix and offers a range of

shows including dance, live bands and community arts productions. The Embankment, a vast green space nearby, regularly attracts concerts, arts and comedy festivals, as well as the UK's largest beer festival outside of London!

Playing host to a diverse mix of live entertainment including music, theatre and comedy - with the likes of Al Murray and Jimmy Carr gracing its stage - the Cresset theatre offers great choice too.

Out and about

Peterborough boasts a selection of stylish bars, clubs and local pubs all right in the heart of the city centre, creating the perfect environment for a great night out.

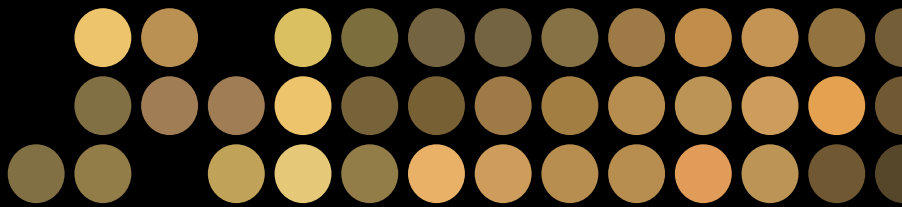
Whether you like Italian, Indian, Thai or gastro pub dining, finding something to suit your palate won't be difficult in Peterborough. As well as major operators like Pizza Express, Bill's and Nando's, we also have great high-quality independent restaurants such as The Banyan Tree, The Beehive and British fine-dining experience, Clarkes.

Green space galore

Peterborough boasts an abundance of beautiful open space. With 2,000 acres of park land, stretching out for 11 km from the city centre, Nene Park is easily accessible and a great place to burn off some energy. Whether it's water sports, cycling or golf that you prefer, there's plenty to keep you and your friends busy. Located less than three miles outside of the city centre, it's well linked to Peterborough, its surrounding countryside and villages.

The wonderful open countryside of the Fens and 'John Clare Country', and beautiful parks around the city, provide natural open spaces to explore too. Central Park, a Victorian creation just a 10 minute walk from the city centre and a stone's throw from University Centre Peterborough's campus, offers tennis courts and a beautifully maintained, peaceful park.





Shopping

Peterborough's award-winning Queensgate Centre has over 90 stores, including John Lewis, Superdry, Primark and Fat face, and is complemented by independent boutique outlets in the adjoining Westgate Arcade. There are also regular specialist farmers' markets and a longstanding covered market located in the heart of the city which has seen a recent surge in new street food outlets serving up a range of tasty treats.

Retail offerings outside the city include Peterborough Garden Park, which was awarded the best out of town retail development in 2011 by the British Council of Shopping Centres (BCSC) and the Brotherhood Retail Park. Both boast a wide range of top brand stores.

Serpentine Green, located in the Hampton Township to the south of Peterborough, widens the retail choice further with stores including H&M, Outfit and a 90,000 sq ft Tesco's Extra, the UK's largest when it was built.

Sport

And after a day of study what better way to blow off steam than to enjoy the city's vast sporting and leisure offer? Peterborough has a fantastic choice of indoor and outdoor facilities and sports events: from swimming, horse riding, ice skating and ten-pin bowling, to running, indoor climbing, tennis, and martial arts – there's plenty of choice to keep you active in Peterborough.

Or, let the professionals do the hard work while you cheer on our local teams at a League One football match, a Premier League speedway game and a Premier League ice hockey clash!

Fast facts

- Peterborough is a medieval city with a cosmopolitan population of 183,600 people. It's a city focused on investment, growth, connectivity and opportunity, and has an increasing reputation as the city of choice for major global players, SMEs and innovative start-up companies.
- With access to London in 45 minutes and direct, fast trains to the north of the country, Peterborough boasts excellent transport links, world-class internet connectivity and exciting plans for growth.
- Peterborough is one of the UK's 4 future city demonstrators and home to the country's largest cluster of environmental businesses. Through our smart city programme we're changing the way our urban systems work and creating the UK's environment capital.



How to find us



Park Crescent
Peterborough
Cambridgeshire
PE1 4DZ



All information contained in this course brochure is believed correct at the time of print and is subject to change (April 2016).

UCP University Centre Peterborough

Park Crescent, Peterborough, Cambridgeshire, PE1 4DZ

www.ucp.ac.uk

ucpenquiries@anglia.ac.uk

01223 695750 / 0122 369 5750



All information contained in this course brochure is believed correct at the time of print and is subject to change (April 2015).



Peterborough
Regional College



Anglia Ruskin
University